

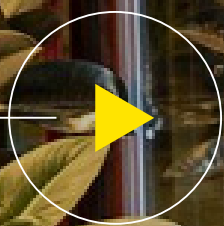


Your Partner In Lift Solutions.

Home Lift Catalogue.



Home Lift Catalogue





Index

- 01 ▶ **Armony**
- 02 ▶ **Armony Lite**
- 03 ▶ **Finishes**
 - 3.1 Car models
 - 3.2 Car Finishes
 - 3.3 Operating Panel & Indicators
 - 3.4 Structures



RALOE





0.1

Armony

Armony is the most versatile home lift with an infinite number of car finishes and with a load range up to 500 kg.

► Applications

Residential buildings
Elimination of architectural barriers
Accessibility

Advantages

Maximum safety:

We have exhaustively studied its design to ensure the safety standard of a lift: Entrance detection system, door reopening to avoid hitting the passenger and car levelling

Decorative versatility:

Wide range of decoration possibilities.

Single-phase:

Works on any single-phase 220 V socket.

Space optimization:

Up to 80% use of the shaft.

Emergency rescue:

Equipped with a rescue system that allows passengers to be evacuate in the event of power failure.





Technical features

Duty load (Kg)	180 - 400	
Duty speed (m/s)	Up to 0,15	
Power single pahse (KW)	From 4,3	
Machine room	Yes / Power unit cabinet	
Entrances	0 - 90° - 180° - 270°	
Maximum Travel (m)	24	
Minimum pit (mm)	Q ≤ 385 Kg	130
	Q > 385 Kg	140
Minimum headroom (mm)	2.285	
Door mechanism	Without car door Automatic and Semi-Automatic Landing Doors	
Power supply	Single-phase	
Car Model	All	
Panoramic car	Yes	



Option:
With car door.



Cabinets

We have a pre-assembled KIT, which consists in hydraulic equipment + cabinet + control panel, everything already assembled, pre-wired and tested in the factory. Facilitates commissioning (Plug and Play).



0.2 Armony Lite



Homelift Hydraulic Armony Lite is the hydraulic homelift with the best value for money in the market.

Car decoration:

OPTIMA and DINAMIC models.

Option:

With car door.



The most competitive option for a Homelift.

Robust and compact set, car frame + car.

Easy assembly from inside the car.



► **Armony Lite car models**



Dinamic

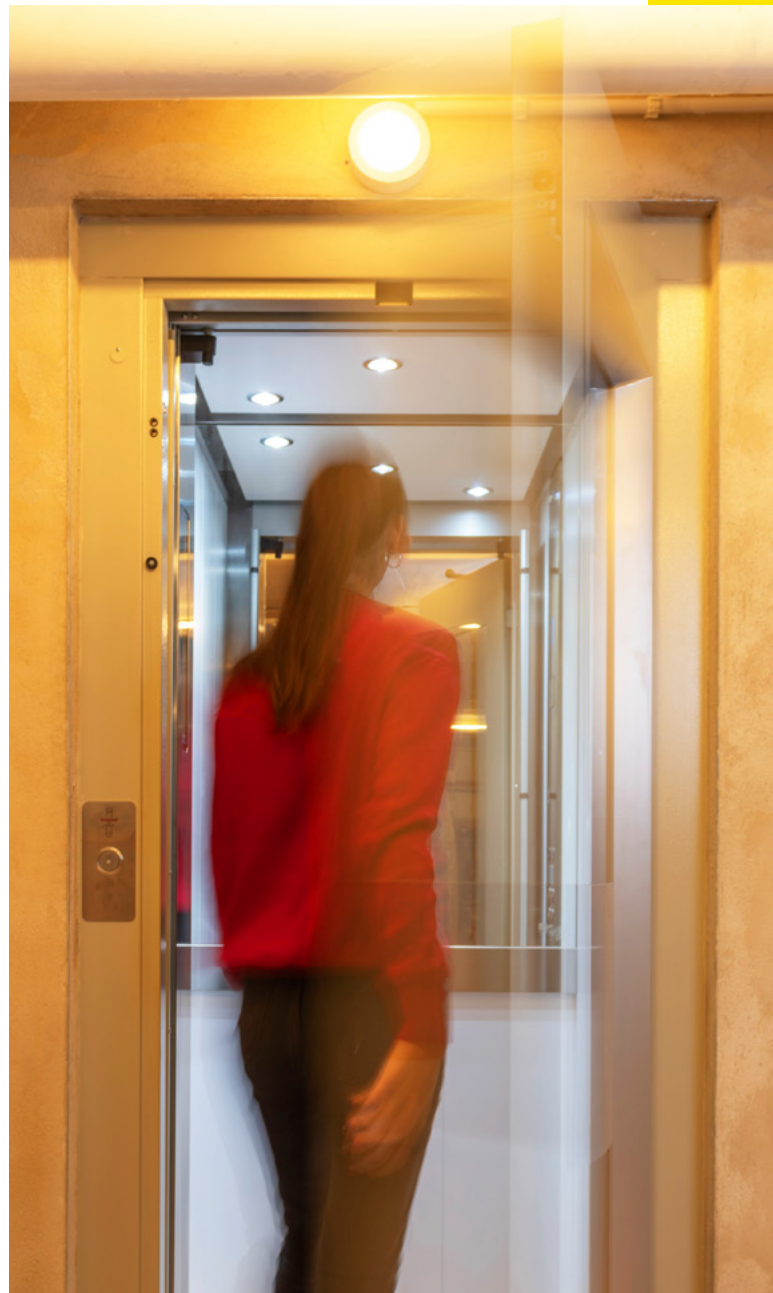


Optima



Technical features

Duty load (Kg)	180 - 385
Duty speed (m/s)	0,15
Power single phase (KW)	From 4,3
Machine room	Yes / Power unit cabinet
Entrances	0 ° - 90° - 180° - 270°
Maximum travel (m)	24
Minimum pit (mm)	100
Minimum headroom (mm)	2.450
Door mechanism	Without car door Automatic and Semi-Automatic Landing Doors
Power supply	Single-phase
Car Model	Dinamic / Optima
Panoramic car	No





101

Walls

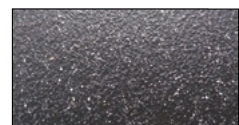
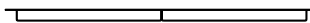
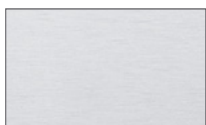
Joint

Floor

Satin Stainless Steel

No joint between slats

Anti-slip rubber Black

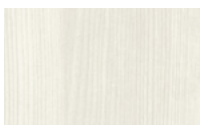




L02

Walls

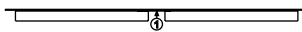
F8841 White Ash



Laminate

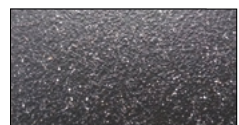
Joint

Straight joint between slats



Floor

Anti-slip rubber Black



*M02 also available in Melamine



L03

Walls

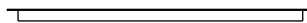
F6307 Burnt Strand



Laminate

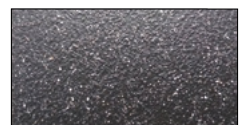
Joint

Smooth panel



Floor

Anti-slip rubber Black



*M03 also available in Melamine



L04

Walls

FI139 Cerezo



Laminate

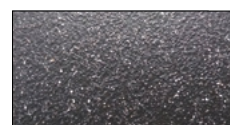
Joint

No joint between panels



Floor

Anti-slip rubber Black



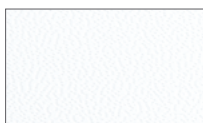
*M04 also available in Melamine



S01

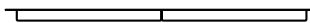
Walls

White Skinplate



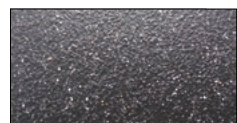
Joint

No joint between slats



Floor

Anti-slip rubber Black





CH01

Walls

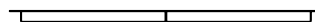
Beige RAL 1019



Painted Sheet

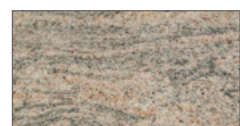
Joint

No joint between slats



Floor

Sahara Winds





Quartz

Walls

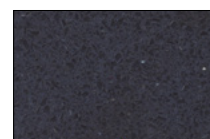
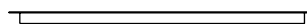
Joint

Floor

White RAL 9003

Smooth panel

Stellar Black



Back painted glass



Your Partner
In Lift Solutions.



Walls

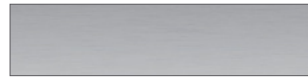
Skinplates



White



Simil stainless steel



Stainless Steel



Grey



Cream

Painted Sheet



White RAL 9016



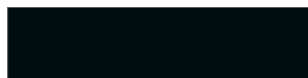
Beige RAL 1019



Pearl Light Grey RAL 9022*



Metallic grey RAL 9006



Black RAL 9005



Blue RAL 5005

* Tariff Type 2

Back painted glass (under request)

Matte (Tariff Type 3)



Oyster white RAL 1013



White RAL 9003*



Bronze



Light Brown RAL 1236

*Pistachio green (hand painted, under request)

*Tariff Type 2

Gloss



Metallic grey RAL 9006



Black Starlight RAL 0337*

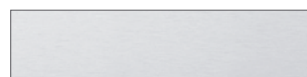


Aluminium RAL 9007



Green RAL 8615

Stainless Steel



Brushed



Checks



Canvas



Leather



Linen



Polished

Available any other finish from:





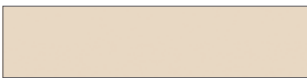
Laminated (in stock)



F2274 White France



F2273 Seringa



F2833 Sandstone



F8841 White Ash



F0190 Finn Beech



F1139 Cherry Tree



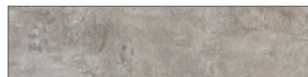
F1062 Smoked Oak



F6307 Burnt Strand*



F7927 Folkestone



F8830 Elemental Concrete

Laminated (under request)



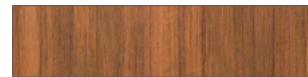
F7884 Blue



F2478 Bermuda



F1997 Ocean



F8849 Natural Teak



F8848 Black Legno



F7837 Graphite



F8833 Elemental Graphite



F8832 Elemental Corten



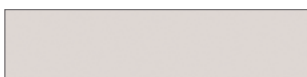
F3091 Crystal White

*Tariff typo 3

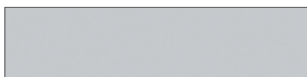
* Other formicas available at <https://www.formica.com/es-es>

Colors shown may vary from the actual color depending on the computer monitor settings or the printing conditions.

Melamine



Cream



Grey



Chocolat



Blue



Cervine Pine



Beech



Cherry tree



Habana Linen



Dark Oak

Not in compliance with the standard EN 81.20



Floors

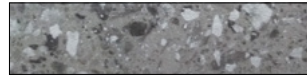
Anti-slip rubber 4,5 Kg / m²



Beige



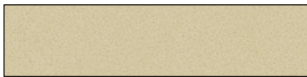
Oak



Grey granite



Blue



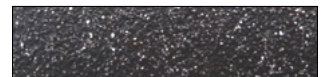
Sand



Grey



Grey concrete



Black

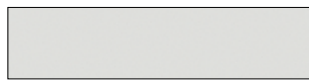
Artificial Stone 49 kg / m²

Tariff Type 1



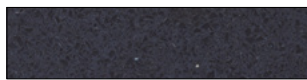
Grey Expo

Tariff Type 2



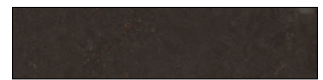
White North

Tariff Type 3



Black Starlight

Tariff Type 3



Merope



Concrete Spa



Royal Reef

Natural granite 56 kg / m²

Tariff Type 1



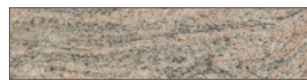
Pink Porriño

Tariff Type 2



White Crystal

Tariff Type 3



Sahara Winds

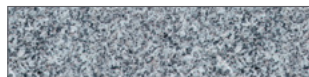
Tariff Type 4



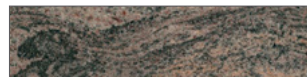
Dark Blue Labrador



Grey Perla



Grey Quintana



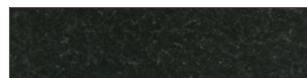
Reliquia



Andromeda



Black South Africa



Intense Black

Metallic floor



Aluminum checkerboard
6 Kg/m²



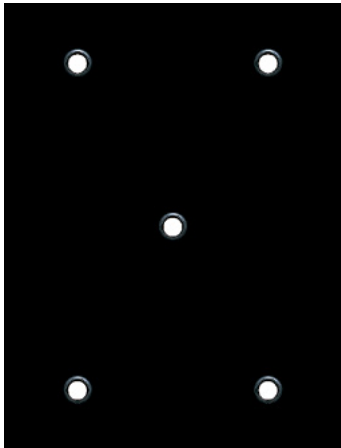
Stainless steel 12 Kg/m²



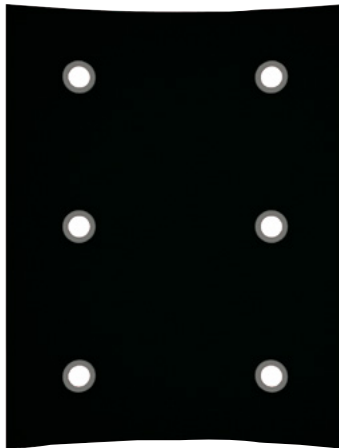
Steel durbar plate 36 Kg/m²



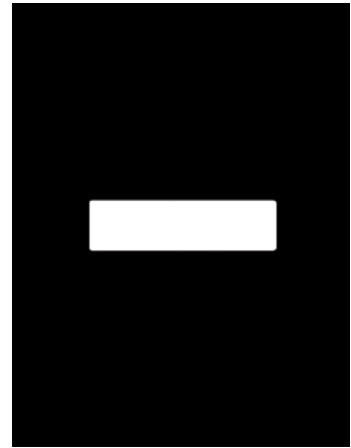
Techos



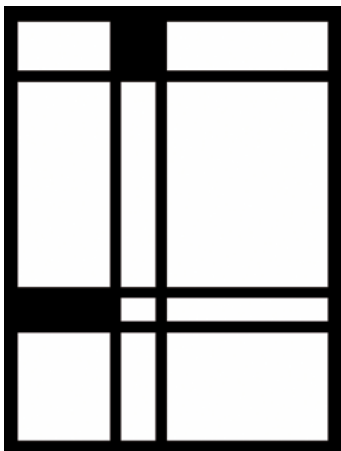
LED spots



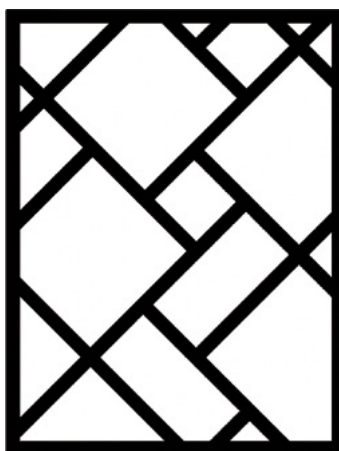
Curved LED spots



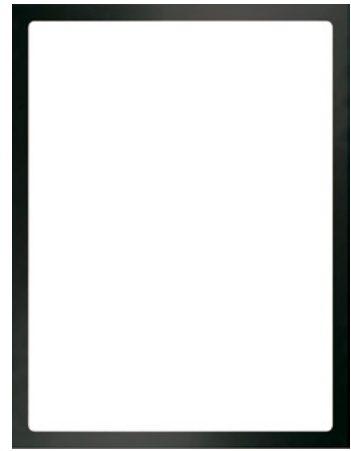
LED Strip



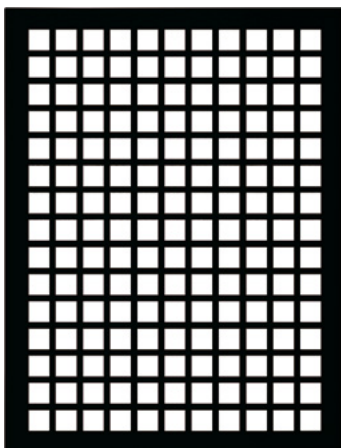
Mondrian



Arte



Marco



Mosaic



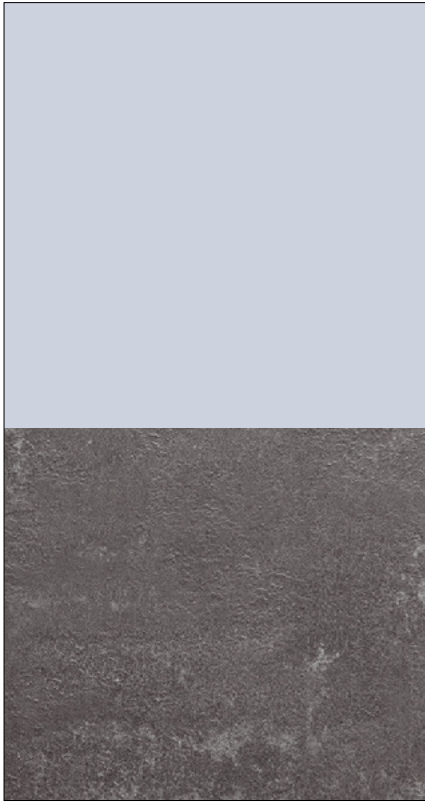
Tinted glass



All ceilings can be selected in white, black and stainless steel finishes.



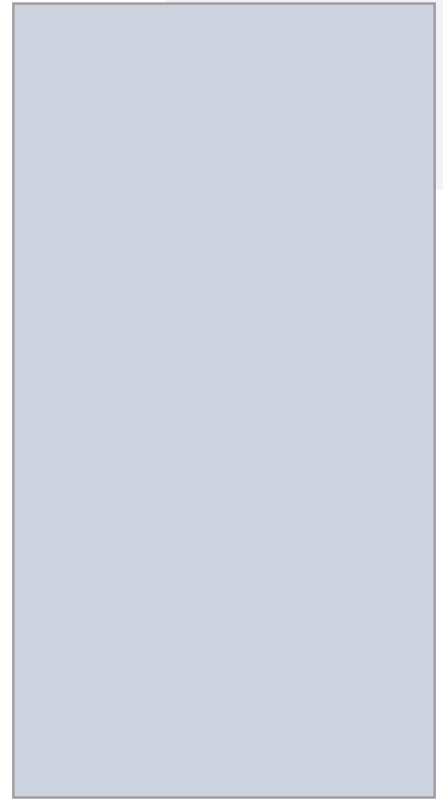
Mirror



1/2 Height



Slat mirror



Full mirror

Handrail

STANDARD EN 81-20



1



2



3



4



5



6

- 1. Rectangular stainless steel
- 2. Rectangular skinplate
- 3. Straight tubular polished St. Steel
- 4. Curved tubular satin St. Steel
- 5. Curved tubular polished St. Steel
- 6. Curved tubular painted black

Automatic door



Primed
Stainless steel



Big vision panel



Folding Bus door big vision panel



Full glass stainless steel frame



Semi-automatic doors



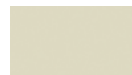
Standard Vision panel



Big vision panel

Door finishes

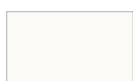
STANDARD



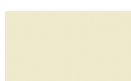
RAL 7032

► Embossed Epoxy

OTHERS



RAL 9016



RAL 1015



RAL 9006



RAL 7004



RAL 1018



RAL 1019



RAL 6021



RAL 1034



RAL 3020



RAL 5012



RAL 8023



RAL 7010



RAL 7012



RAL 3004



RAL 6005



RAL 5011



RAL 9005

► Smooth Stainless steel

STANDARD



AISI 441 2B/BA



AISI 304 2B



AISI 316 2B



AISI 441 2B



AISI 304 2B



AISI 304 2B



AISI 316 2B



AISI 316 4N

DECORATIVE



AISI 304 BA



AISI 304 BA



AISI 316 BA



AISI 304 BA



AISI 304 BA



AISI 304 BA



AISI 304 BA

► Patterned Stainless steel



AISI 441 BA⁽¹⁾



AISI 304 BA



AISI 304 BA



AISI 316 BA⁽¹⁾



AISI 441 BA⁽¹⁾



ISI 304 BA



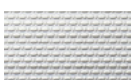
AISI 304 BA



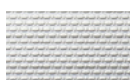
AISI 304 BA



AISI 441 BA⁽¹⁾



AISI 304 BA



AISI 304 BA



AISI 316 BA⁽¹⁾

Available any other finish from:



Car Operating panels



Lighting



Epsilon



Glass panel

Standard Height 1960 mm
Standard only for lifts. For Home Lift, supplied without display.

Handrail Type (EN81.70)



Landing operating panels



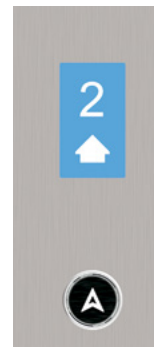
With engraving on steel plate



With transparent window plate



Surface mounted



With Display

Push buttons



Bas 120



Bas 120 Black



RT42



US9F-EN



US90 Jumbo



US95 Jumbo



US95-EN

Indicators



SURFACE mounted



DIRECTIONAL ARROWS



RETRO

Displays



TFT 2,8"
CARLOS SILVA



7"
CARLOS SILVA



TFT 5,6"
CARLOS SILVA



10"
CARLOS SILVA













3.4

Structures

The structures for Passenger Lift and Home Lift give us flexibility, by eliminating architectural barriers and bringing solutions for the total accessibility.

STRUCTURES

► Colors

	RAL 9002		RAL 3004
	RAL 1015		RAL 6005
	RAL 7032		RAL 5003
	RAL 7001		RAL 9005
	RAL 8003		OXIRON

Advantages

The assembly time is reduced by over 60% compared to an installation with traditional construction system, with a clean, fast, and quiet product.

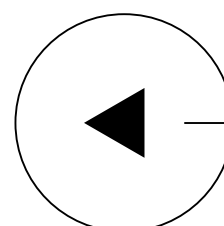
Absolutely respectful with the environment, both in the assembly process and industrial development.

Ease of assembly, makes this product highly simple to operate complying with the higher safety standards.



Characteristics

Multi-purpose technical solution for every building, they can be adapted to the different constructive requirements. TC series are designed to be integrated in the existing building and its environment.





Ceiling (metal sheet or glass)



Roof over door (metal sheet or glass)



Handrail



Ventilation



Types of enclosure



Transparent glass



Frosted glass



Total glass



Blind sheet



Mesh sheet

A photograph showing a person in a wheelchair being assisted by another person on a staircase. The person in the wheelchair has short, wavy white hair and is wearing a light-colored top and dark pants. The person assisting them is wearing a grey long-sleeved shirt and blue denim jeans with cuffed hems. They are both wearing olive green sneakers. The background shows a staircase with a metal railing and a light-colored wall. The text "Your expert and reliable partner" is overlaid on the image in white, with a yellow play button icon to the left.

Your expert and
reliable partner

RALOE



