



## 1.5

Hydronic is the ideal hydraulic lift for existing buildings, capable of adapting to any shaft type.

### ► Applications

**Residential  
Refurbishments  
Existing shafts  
Modernizations  
Minimum shaft dimensions**

## Advantages

### Versatility:

We adapt each lift to each different shaft optimizing spaces.

### Reduced pit and headroom:

In existing buildings, we adapt our lifts in compliance with the Regulations for pit and headroom. (EN 81.21).

### Confort:

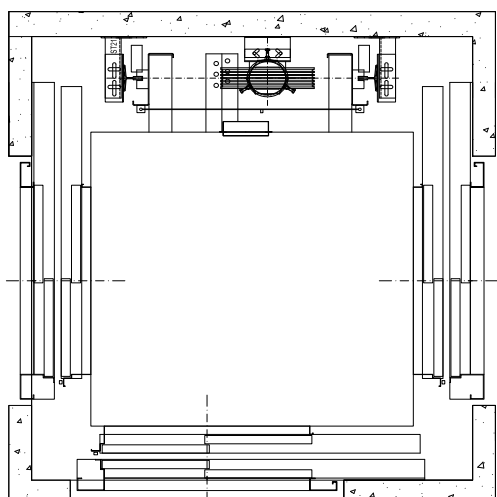
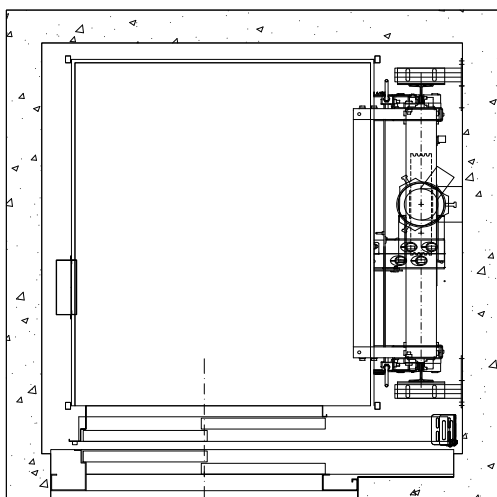
Excellent level of confort, equivalent to a traction lift using electronic valves

### Adaptability:

Easy control and maintenance.

### Safety:

Automatic emergency system always active during the descent, even in the event of power failure.



## Technical characteristics

<b>Rated load (Kg)</b>	180 - 1.800
<b>Rated speed (m/s)</b>	0.3 - 0.63 (1m/s optional)
<b>Machine room</b>	MR / Power unit cabinet/ MRL Tank in pit
<b>Entrances</b>	0-90° - 180° - 270°
<b>Roping</b>	1:1 2:1
<b>Rope diameter (mm)</b>	8,0 - 10,0 - 12
<b>Guiding system</b>	Pivoting or rollers on the safety gear side to guarantee operation



Minimum Pit (mm)			Minimum Headroom (mm) <sup>(1)</sup>		
Q (Kg)	Min. Pit	Necessary headroom	Q (Kg)	Min. Headroom	Necessary pit.
<b>320</b>	250	2.730	<b>320</b>	250	2.730
<b>630</b>	265	2.655	<b>630</b>	265	2.655
<b>1.000</b>	350	3.010	<b>1.000</b>	350	3.010
<b>1.250</b>	350	3.010	<b>1.250</b>	350	3.010
<b>1.800</b>	350	3.020	<b>1.800</b>	350	3.020

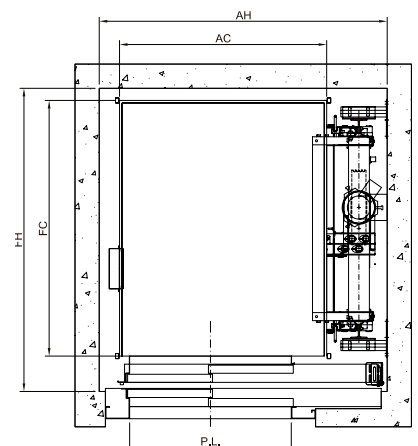
**Travel** Up to 25

**Door type** Automatic - Semiautomatic

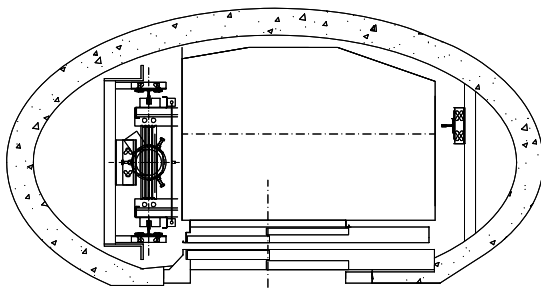
**Restrictive technical measure** GMV - MORIS - BUCHER

**Panoramic car** Yes

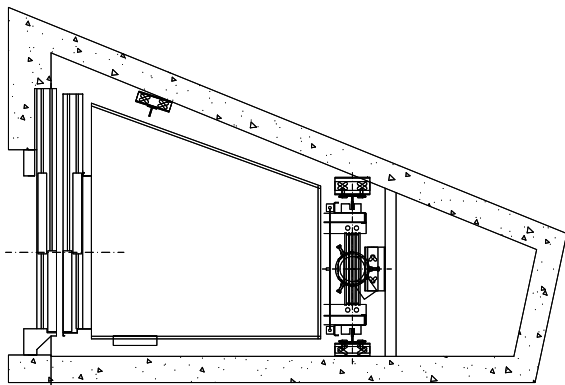
**Weatherproof** Yes



Panoramic



Irregular shaft



Borehole piston

