

## DATA SHEET TTV STRUCTURE

### GENERAL DETAILS

 OPTIMUS

 SYMBIO

 HYDRAULIC

 MYDOMESTIC (Homelift):  Door car

Nominal Load \_\_\_\_\_ kg

Nº of stops \_\_\_\_\_

Nº of exterior doors \_\_\_\_\_

Travel \_\_\_\_\_ mm

Pit \_\_\_\_\_ mm

Headroom \_\_\_\_\_ mm

### SHAFT DETAILS

Exterior width \_\_\_\_\_ mm

Exterior depth \_\_\_\_\_ mm

 INTERIOR STRUCTURE

 Stairwell

 Other: \_\_\_\_\_

 EXTERIOR STRUCTURE

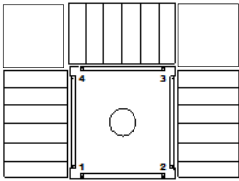
 On facade

 Other: \_\_\_\_\_

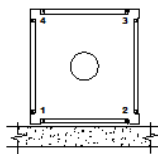
#### Structure fixations to the building:

 Stairwell, fixation on,

more than two pillars.


 Inside stairwell or on facade,

fixation only on two pillars.



#### Nº of entrances:

 Simple

 Double 90°

 Double 180°

 Double 270°

 Triple

#### Distance between fixings:

 1000 mm

 1500 mm

 Special

#### Landing doors:

 Automatics

 Semiautomatics

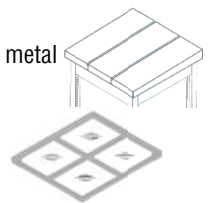
 Supported by landing

 Flown in structure

#### Roof:

 Without roof

 Roof from sheet metal

 Roof from glass


### PILLARS WITH CLADDING AND FIXTURES

#### Cladding:

 Sheet metal

 0°  90°  180°  270°

 Transparent Glass

 0°  90°  180°  270°

 Without cladding

 0°  90°  180°  270°

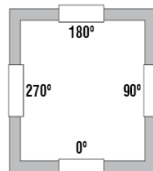
 Traslucent Glass

 0°  90°  180°  270°

 Drilled sheet metal

 0°  90°  180°  270°

 Stainless Steel

 0°  90°  180°  270°


Structure Colour: \_\_\_\_\_

#### Door sides and door lintels:

 No

 Sheet Metal

 Transparent Glass

 Stainless steel

#### Observations: