



Your Partner **In Lift Solutions.**

Accessibility Catalogue.



Accessibility Catalogue.



Index

01	► Platform Lifts		
	1.1 Armony	—	02
	1.2 Armony Lite	—	06
	1.3 Stylus	—	10
	1.4 Stylus SX	—	14
02	► Finishes		
	2.1 Lift Car Models & Styles.	—	18
	2.2 Lift car finishes.	—	26
	2.3 Doors	—	32
	2.4 Fixtures	—	35
	2.4.1 Car Operating panels		
	2.4.2 Landing operating panels		
	2.4.3 Pushbuttons & indicators		
	2.4.4 Indicators		
	2.5 Structures	—	38



1.1

Armony

It is the most versatile home lift with a wide range of possibilities to decorate your lift car and loads up to 500kg.

► Applications & uses

Residentials

Removal of architectural barriers

Accessibility

Advantages

Maximum safety:

We have exhaustively studied its design to guarantee that this lift model incorporates the highest security standards.

Decorative versatility:

Extensive catalogue of possibilities and finishes

Single-phase:

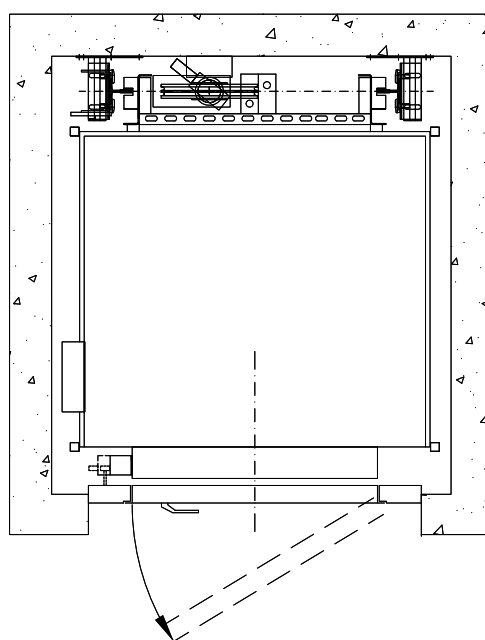
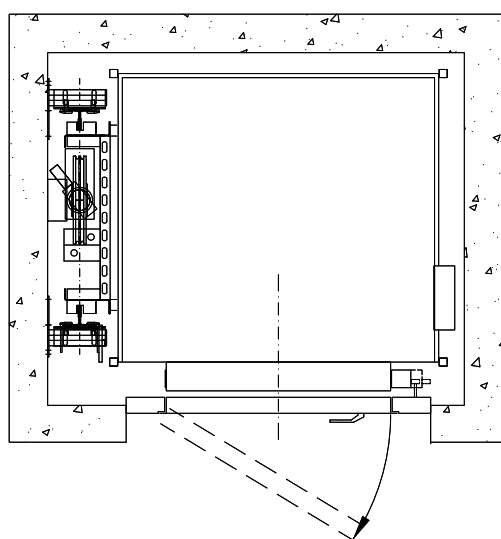
It works on any single-phase 220 V socket outlet.

Space optimization:

Uses of up to 80% of the shaft.

Emergency features:

Equipped with a rescue system that allows passengers to evacuate even in the event of a power supply failure.





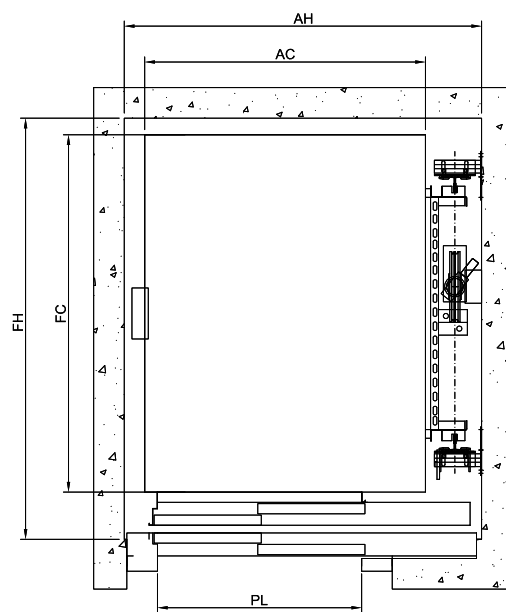
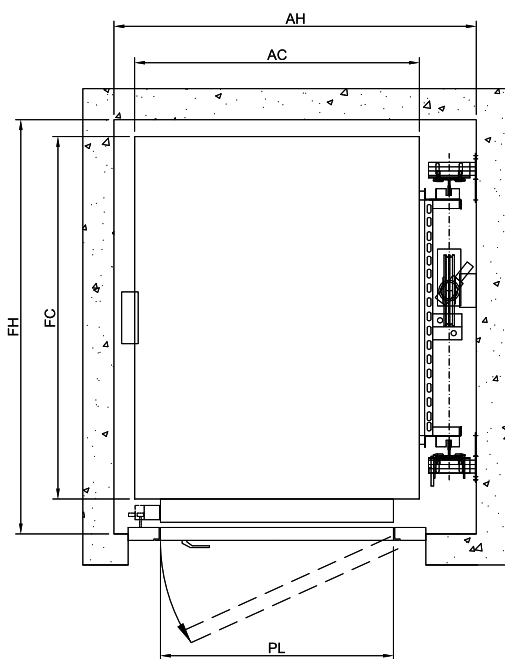
Technical Features

Rated Load (Kg)	180 – 500	
Rated speed (m/s)	0,15	
Power (KW)	From 2,2	
Machine Room Y/N	Yes / Power unit in Cabinet	
Car entrances	0 – 90° – 180° – 270°	
Max. Travel (m)	24	
Minimum Pit's (mm)	Q ≤ 400 Kg	135
	Q > 400 Kg	150
Minimum Headroom (mm)	2.285 Without Lift Car door.	
Type of Doors	With or without automatic car doors Automatic and semi-automatic Landing doors	
Power supply	Single-Phase*	
Panoramic Lift	Yes	
Cabin surface	Up to 2m ²	

*Three-phase power supply also available



Optional:
With cabin door.



Multi-purpose single cabinet

Our single cabinet KIT incorporates fully assembled & pre-wired both the hydraulics & control panel of the lift. The Plug & Play wiring makes very easy the installation and commissioning of the job, and everything comes tested from factory.



1.2 Armony Lite

Armony Lite is the hydraulic home lift with the best value for money of the market.

Car Lift Styles:

Dynamic and Optima Models.

Option:

With cabin door.



Best cost-effective option for a Home lift.

Sturdy, Compact frame & lift car.

Easy assembly from inside the lift Car.



► Types of Cabins Armony Lite



Dynamic



Optima



Technical Features

Rated Load (Kg)	180 – 385
Rated Speed (m/s)	0,15
Power (KW)	From 2,2
Machine Room Y/N	Yes, Power unit in Cabinet
Car entrances	0° – 90° – 180° – 270°
Max. Travel (m)	15
Minimum Pit (mm)	100
Huida Mínima (mm)	2.450
Type of door	No Cabin Door Automatic or semi-automatic on landing.
Power supply	Single Phase*
Car models	Dynamic / Optima
Panoramic	No

*Three-phase power supply also available





Your Partner In Lift Solutions.



Stylus Is a Vertical stair lift that is easy to install and provides an optimal ride comfort.

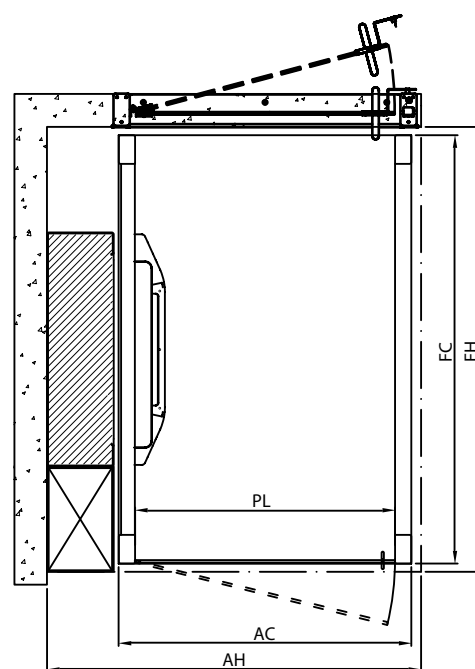
Stair lift STYLUS

The stylus stairlift is a RALOE product **designed to easily overcome architectural barriers** that provides access to buildings or mobility at home for those with reduced mobility or needing a wheelchair for their everyday life.

Compact, robust and ergonomic, the STYLUS is compliant with the European Machinery Directive 2006/42/CE or the norm EN 81-41.

► Applications & uses.

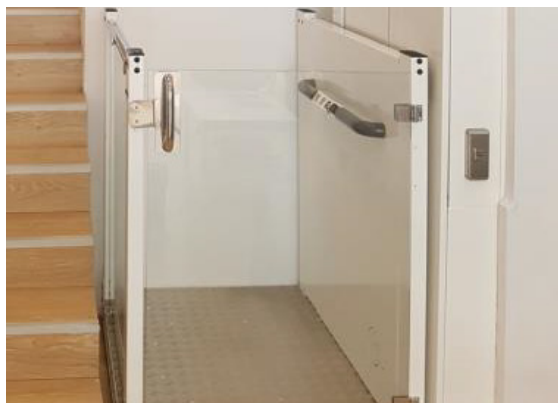
Residentials
Removal of Architectural barriers
Accessibility



Technical Features

Rated Load (Kg)	Up to 500
Rated Speed (m/s)	0,15*
Travel (m)	Up to 12
Power (CV)	2
Minimum Pit (mm)	130
Power supply	Single Phase

* VVVF control going up and Hydraulic Valve with 2 speeds going down for outstanding energy efficiency.



Features

Hydraulic power unit with VVVF inverter control and two speeds valve going down. Automatic re-levelling.

Column made of galvanized metal profiles every 500 mm, specific lift guide rails to guarantee a perfect chassis guiding and compliance with metal bending requirements according to EN81-20 standard.

Traction: 1:1, by means of a direct-acting hydraulic cylinder (up to 1.5 m travel and 2-stage telescopic, up to 3.0 m travel). For projects up to 12 m travel, hydraulic cylinder with 2:1 roping. With closed shaft and unitary verification.

Car Frame made of galvanized metal profiles and zinc-plated steel pallets.

Integrated COP, handrail type. Push buttons with Braille and acoustic indication for overload and emergency.

Doors: Self-supporting door frame with tubular profiles and tempered glass. Electric security lock with triangular key release. Height 1200 mm or 2000 mm.

Control panel with programmable and configurable automaton. 2 lines for viewing the status of the lift and simple programming. Pre-assembled and constant pulsation system.

Hydraulic power unit with motor powered by 240 Vac single-phase input voltage, ultra-quiet spindle pump and high-performance mechanical valve.

Maximum number of stops 4.

Standard dimensions: 900x1300 mm 180 or (800x1300 mm inside).



Security Systems

Automatic rescue system with UPS.

Anti-crushing device located under the cabin.

Certified **rupture Valve** EN-81.20 (on 2:1 projects)

Mechanical weighing device.

Constant pressure pushbuttons for secured platform movement.

Rescue system: by 240 VAC UPS, operating in down direction only in case of power supply failure.

Electric lock actioned by a triangular Key.

Anti-slip lift car flooring

Bellow option



In Raloe we have a product focused on overcoming the architectural barriers that prevent access to people with reduced mobility on short distances.

Compact, robust and ergonomic design. In accordance with the European Machinery Directive 2006/42/CE

► Applications & uses

**Residential
Removal of Architectural Barriers
Accessibility**



Technical Features

Rated Load (Kg)	Up to 385 kg depending on sizes
Speed Load (m/s)	0,15
Travel (m)	Up to 1
Minimum Pit (mm)	130 no ramp required
Power supply	Single-phase 220 Vac. Up to 1,5 KW, 12A.



Features

Frame made of tubular metal profiles and chequer plate metal sheet. Platform guiding by machined steel parts.

Open car with side enclosure at 1.2 m high or platform with fall prevention toe guards and guiding by curved steel tubes.

Access to the platform by means of mechanical or electrical ramp; for 130 mm minimum pit depth no ramp is required.

Electric security lock with triangular release key.

Push button integrated in doors, avoiding external installations. Adjustable latch bolt to secure the lock. Cylindrical silent block locking damper.

Car operating panel integrated in the handrail. Joystick, operating status LED and overload light.

Control panel and hydraulics cabinet. Control by means of programmable and configurable automaton. 2 lines for viewing the status of the lift and easy programming.

Traction by means of 2 single-acting hydraulic cylinders and central with silent screw pump and rupture valve regulated and certified according to EN 81-20 & 50.

Sizes:

900 x 1.540 mm (800 x 1.540 mm interior).
1.000 x 1.540 mm (900 x 1.540 mm interior).
1.200 x 1.540 mm (1.100 x 1.540 mm interior).

Factory set rupture valve in compliance with EN 81.20.

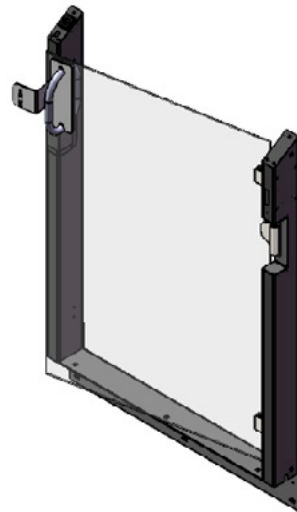
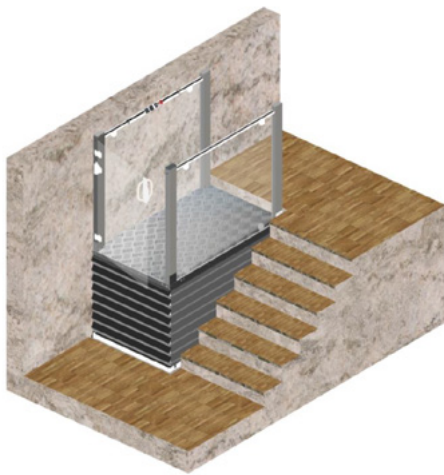
Electric security locks with presence and bolt control and triangular release key.
Hydraulic load weighing device.

Permanent pressure type push buttons with braille and light.

Emergency STOP.

Perimeter protection bellows with sensitive edges for improved safety.

Battery-operated rescue system; operation only when lowering in the event of a power failure.



Options

Landing operating panels:
Key-switches.

Pushbutton: (standard)

Wireless pushbutton

Car entrances: 90°, 180°, 270°
Telephone in cabin.
Photocells on handrails.
Photocells in car entrances

Doors: Half door in car, height 1.200 mm full glass.
half-door in landings, height 1.200 mm full glass.
Landing door height 2.000 mm full glass.

Hinged access ramp:
(compulsory if the pit is less than 130 mm).

Outdoor control panel.

Mechanical door closer.

Automatic doors.

Finishes: in EPOXI paint or stainless steel.
(standard EPOXI Colours RAL 9010 + RAL 9006).
For Weatherproof applications, stainless steel AISI 304 and 316 finishes are also available)



2.1 Lift Car models & styles



101

Walls

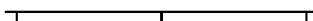
Joint

Floor

Checks Stainless Steel

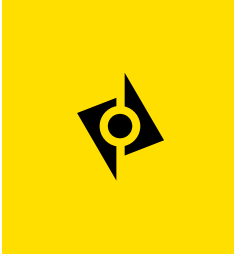


No joint between panels



Granite Naturel Warwick





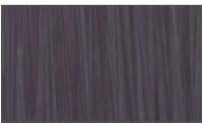
L03

Walls

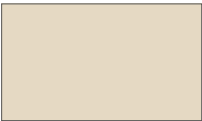
Joint

Floor

F6307 Burnt Strand

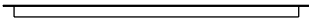


F2833 Sandstone

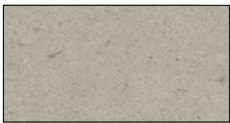


Laminate

Smooth panel



Royal Reef artificial stone



*M03 also available in Melamine



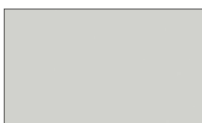
2.1 Lift Car models & styles



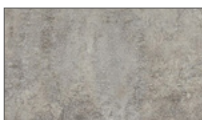
L04

Walls

F7327 Popular Grey



F8830 Elemental Concrete



Laminate

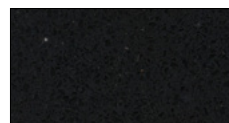
Joint

No joint between panels



Floor

Black Starlight
artificial stone



Car Walls Illumination

Vertical LED strips

*M04 also available in Melamine

**S01****Walls**

Stainless Steel Skinplate

**Joint**

No joint between panels

**Floor**

Anti-slip rubber Black





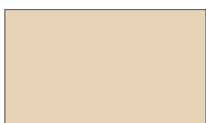
2.1 Lift Car models & styles



CH01

Walls

Light Ivory RAL 1015



Painted Sheet

Joint

No joint between panels



Floor

Pink Porriño natural granite





Quartz

Walls

Joint

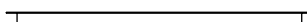
Floor

Terracotta Red RAL 8815

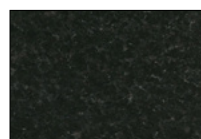


Back Painted glass

Smooth panel



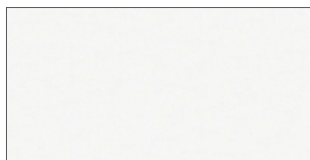
Intense Black natural granite





Walls

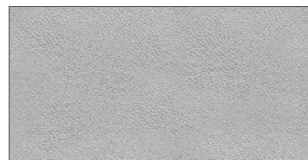
Skinplates



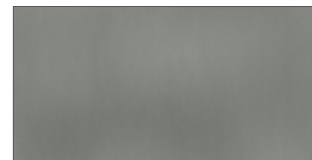
White



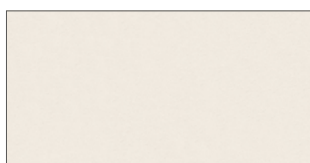
Stainless Steel



Grey



Simil stainless steel



Cream

Painted Sheet



White RAL 9016



Beige RAL 1019



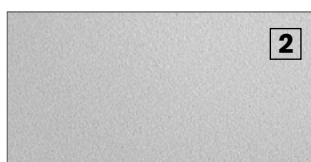
Black RAL 9005



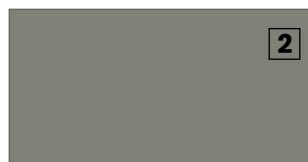
Light Ivory RAL 1015



Metallic grey RAL 9006



Pearl Light Grey RAL 9022



Concrete Grey RAL 7023



Pastel purple RAL 4009

2 Tariff Type 2

* Any other RAL available under request

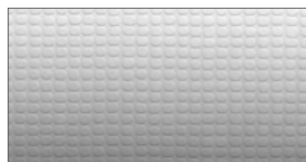
Stainless Steel



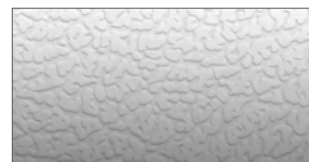
Brushed



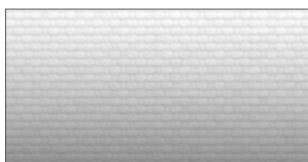
Checks



Canvas



Leather



Linen



Polished

Available any other
finish from:





Walls

Back painted glass



Metallic grey RAL 9006



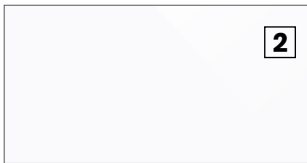
Light Brown RAL 1236



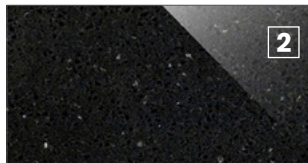
Green RAL 8615



Aluminium RAL 9007



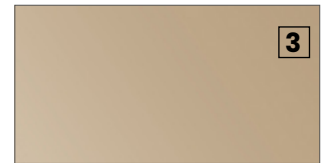
White RAL 9003



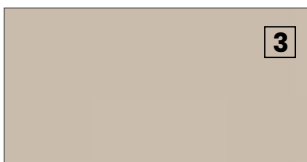
Black Starlight RAL 0337



White Pearl RAL 1013 (matt or gloss)



Bronze



Matt Light Brown RAL 1236



Terracotta Red RAL 8815



Pistachio Green RAL 1164

2 Tariff Type 2

3 Tariff Type 3

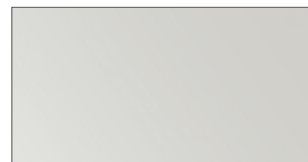
Back painted glass (under request)



RAL 1586



RAL 8017



SILVER



RAL 5002



RAL 2001



RAL 9005



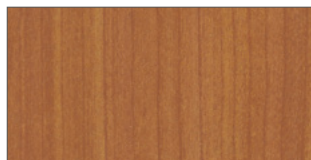


Walls

Laminates



F2274 White France



F1139 Cherry Tree



F7884 Blue China



F7837 Graphite



F2273 Seringa



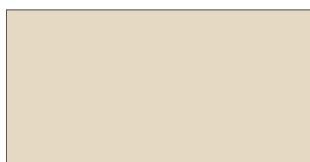
F1062 Smoked Oak



F2478 Bermuda



F8833 Elemental Graphite



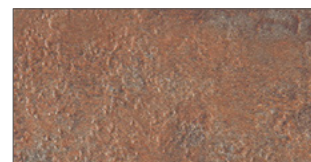
F2833 Sandstone



F5873 SET Ventura Oak



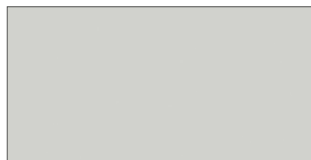
F1997 Ocean



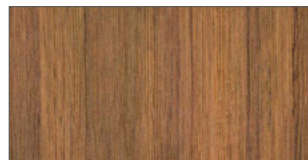
F8832 Elemental Corten



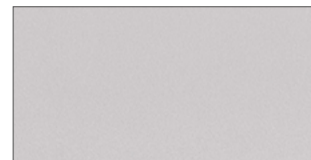
F8841 White Ash



F7927 Folkestone



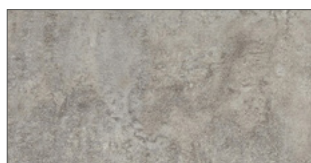
F8849 Natural Teak



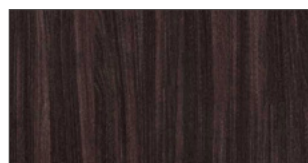
F0193 Xenon



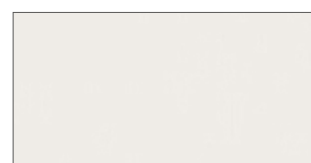
F0190 Finn Beech



F8830 Elemental Concrete



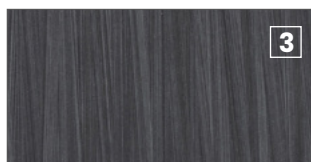
F8848 Blackened Legno



F7923 Surf



F3091 Crystal White



F6307 Burnt Strand

3 Tariff Type 3

* Other formicas available at:

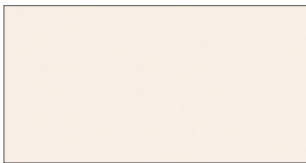
<https://www.formica.com/es-es>

Colors shown may vary from the actual color depending on the computer monitor settings or the printing conditions.

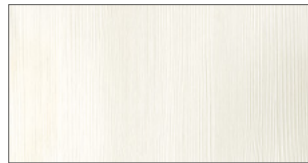


Walls

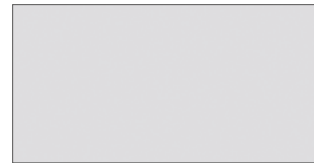
Melamina



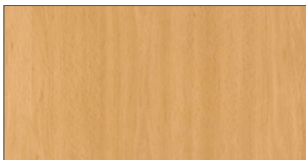
Cream



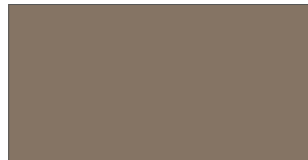
Cervine Pine



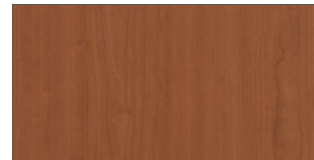
Grey



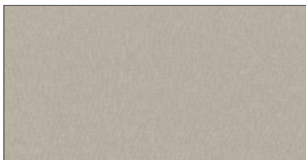
Beech



Chocolat



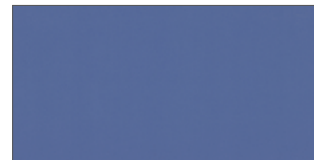
Cherry tree



Habana Linen



Dark Oak



Blue

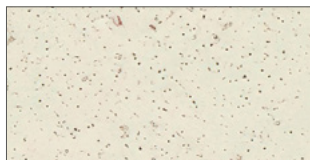


Not in compliance with the standard EN 81.20

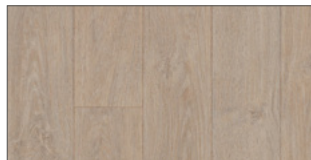


Floors

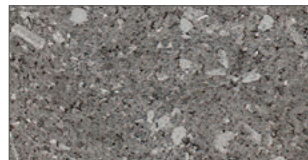
Anti-slip rubber 4,5 Kg / m²



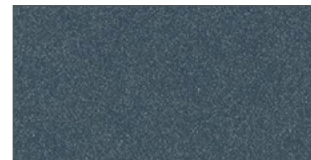
Beige



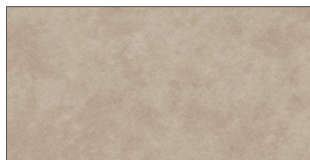
Oak



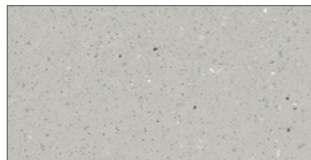
Grey granite



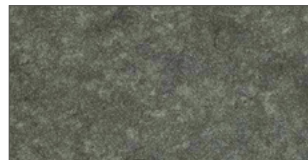
Blue



Sand



Grey

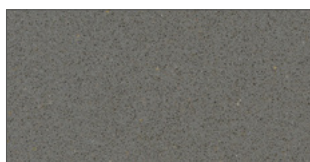


Grey concrete

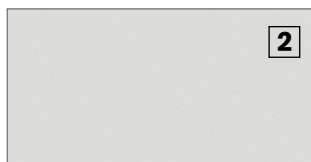


Black

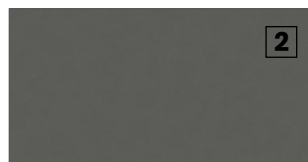
Artificial Stone 49 kg / m²



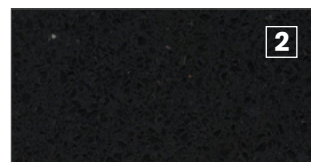
Grey Expo



White North



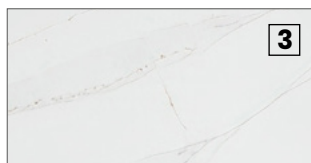
Concrete Spa



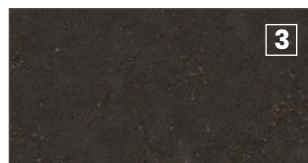
Black Starlight



Royal Reef



Ethereal Glow



Merope



Rougui

2 Tariff type 2

3 Tariff type 3



2.2 Lift Car finishes

Natural granite 56 kg / m²



Grey Pearl



Pink Porriño



White Crystal



White Trevi



Grey Quintana



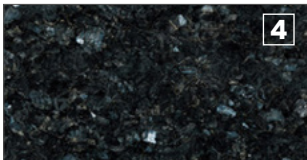
Intense Black



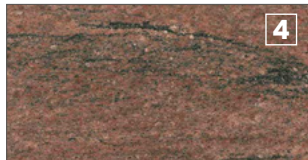
Black South Africa



Andromeda



Dark Blue Labrador



Guyana



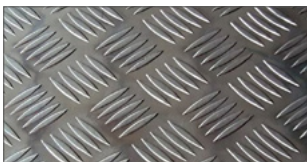
Warwick Rubi

 Tariff Type 2

 Tariff Type 3

 Tariff Type 4

Metallic floor



Aluminum checkerboard
6 Kg/m²

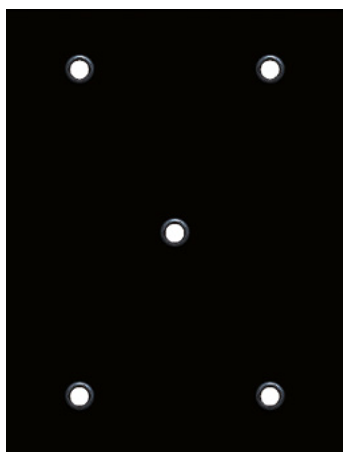


Stainless steel 12 Kg/m²

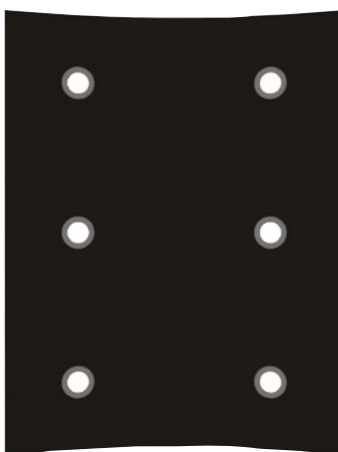


Steel durbar plate 36 Kg/m²

Ceilings



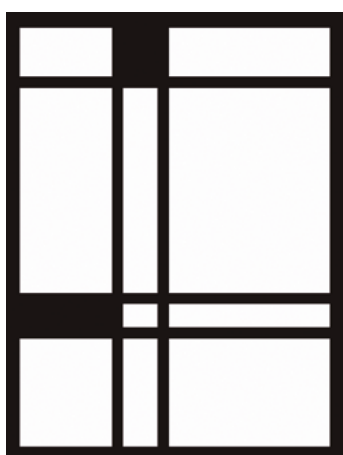
LED spots



Curved LED spots



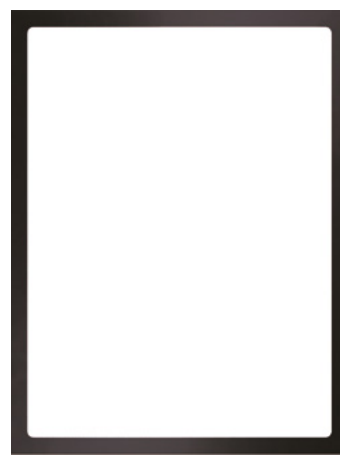
LED Strip



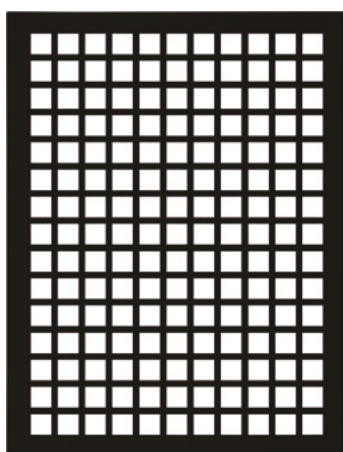
Mondrian



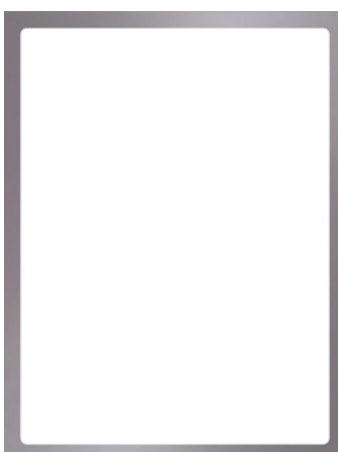
Arte



Marco



Mosaic



Tinted glass

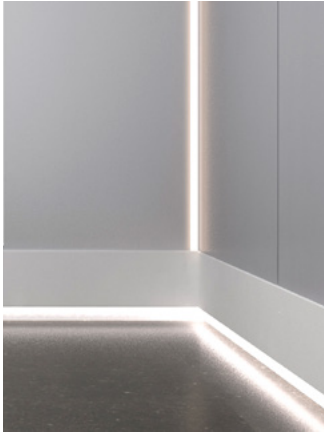


LED Bars

► All ceilings can be selected in white, black and stainless steel finishes.



Indirect lighting



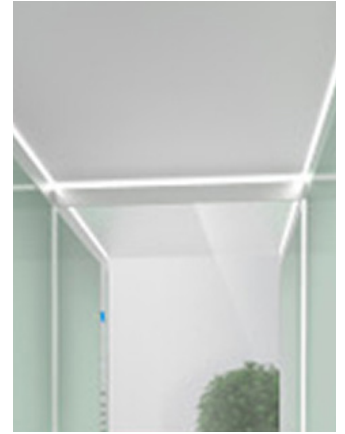
Skirting illumination



Car walls illumination



COP Illumination



Ceiling illumination

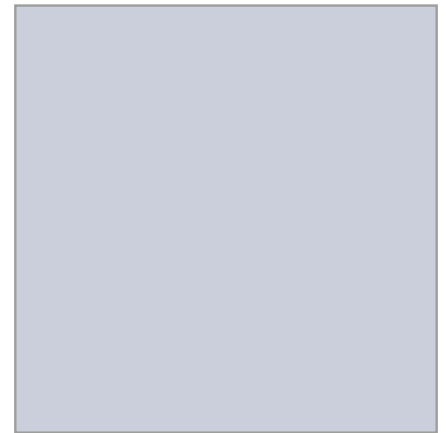
Mirrors



1/2 Height



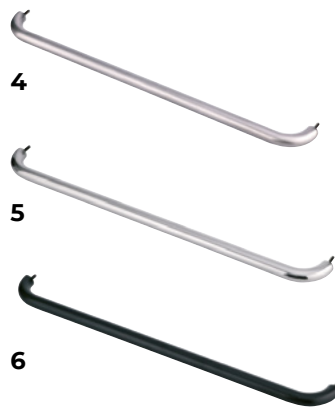
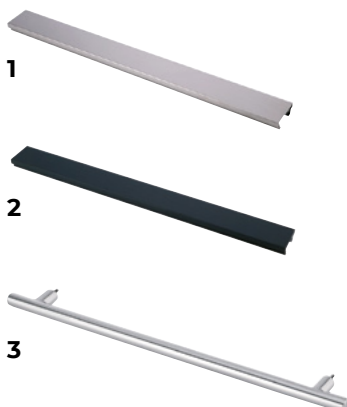
Slim mirror panel



Full mirror

Handrail

STANDARD EN 81-20



1. Rectangular stainless steel
2. Rectangular skinplate
3. Straight tubular polished St. Steel
4. Curved tubular satin St. Steel
5. Curved tubular polished St. Steel
6. Curved tubular painted black

Automatic door



Primed
Stainless steel



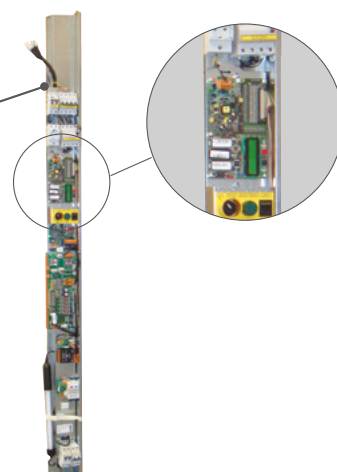
Big vision panel



Folding Bus door big vision panel



Full glass door panels



► Control panel in door frame.

Available for Carlos Silva,
Elec Megom, Sprinte and
New Lift.



RALOE

Semi-automatic doors



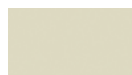
Standard Vision panel



Big vision panel

Door finishes

STANDARD



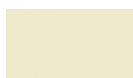
RAL 7032

► Epoxy

OTHERS



RAL 9016



RAL 1015



RAL 9006



RAL 7004



RAL 1018



RAL 1019



RAL 6021



RAL 1034



RAL 3020



RAL 5012



RAL 8023



RAL 7010



RAL 7012



RAL 3004



RAL 6005



RAL 5011



RAL 9005

► Smooth Stainless steel

STANDARD



AISI 441 2B/BA



AISI 304 2B



AISI 316 2B



AISI 441 2B



AISI 304 2B



AISI 304 2B



AISI 316 2B



AISI 316 4N

DECORATIVE



AISI 304 BA



AISI 304 BA



AISI 316 BA



AISI 304 BA



AISI 304 BA



AISI 304 BA



AISI 304 BA

► Patterned Stainless steel

AISI 441 BA ⁽¹⁾

AISI 304 BA



AISI 304 BA

AISI 316 BA ⁽¹⁾AISI 441 BA ⁽¹⁾

AISI 304 BA



AISI 304 BA



AISI 304 BA

AISI 441 BA ⁽¹⁾

AISI 304 BA



AISI 304 BA

AISI 316 BA ⁽¹⁾

Available any other
finish from:



Car Operating panels



Standard
Height 1960 mm
Standard only for lifts. For Home Lift,
supplied without display.

Handrail Type (EN81.70)



Landing operating panels



With engraving on steel plate



With transparent window plate



Surface mounted



With Display

Push buttons



Bas 120



Bas 120 Black



RT42



US91-EN



US90 Jumbo



US95 Jumbo



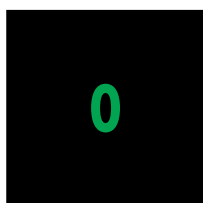
US95-EN

Indicators



SURFACE mounted

Indicators



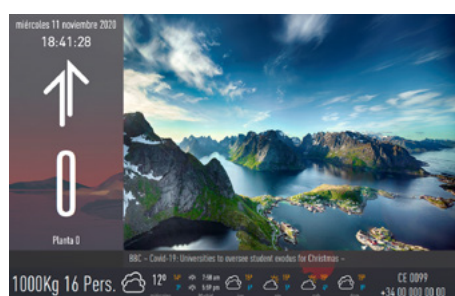
TFT 2,8"
CARLOS SILVA



7"
CARLOS SILVA



TFT 5,6"
CARLOS SILVA



10"
CARLOS SILVA



2.5 Structures

The structures for Passenger Lift and Home Lift give us flexibility, by eliminating architectural barriers and bringing solutions for the total accessibility.

STRUCTURES

► Colors



RAL 9002



RAL 3004



RAL 1015



RAL 6005



RAL 7032



RAL 5003



RAL 7001



RAL 9005



RAL 8003



OXIRON

Advantages

The assembly time is reduced by over 60% compared to an installation with traditional construction system, with a clean, fast, and quiet product.

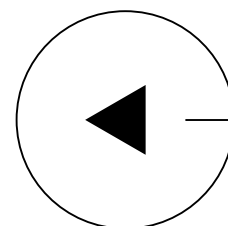
Absolutely respectful with the environment, both in the assembly process and industrial development.

Ease of assembly, makes this product highly simple to operate complying with the higher safety standards.



Characteristics

Multi-purpose technical solution for every building, they can be adapted to the different constructive requirements. TC series are designed to be integrated in the existing building and its environment.





Ceiling (metal sheet or glass)



Canopy over door (metal sheet or glass)



Handrail



Ventilation

Types of enclosure



Transparent glass



Frosted glass



Total glass



Blind sheet



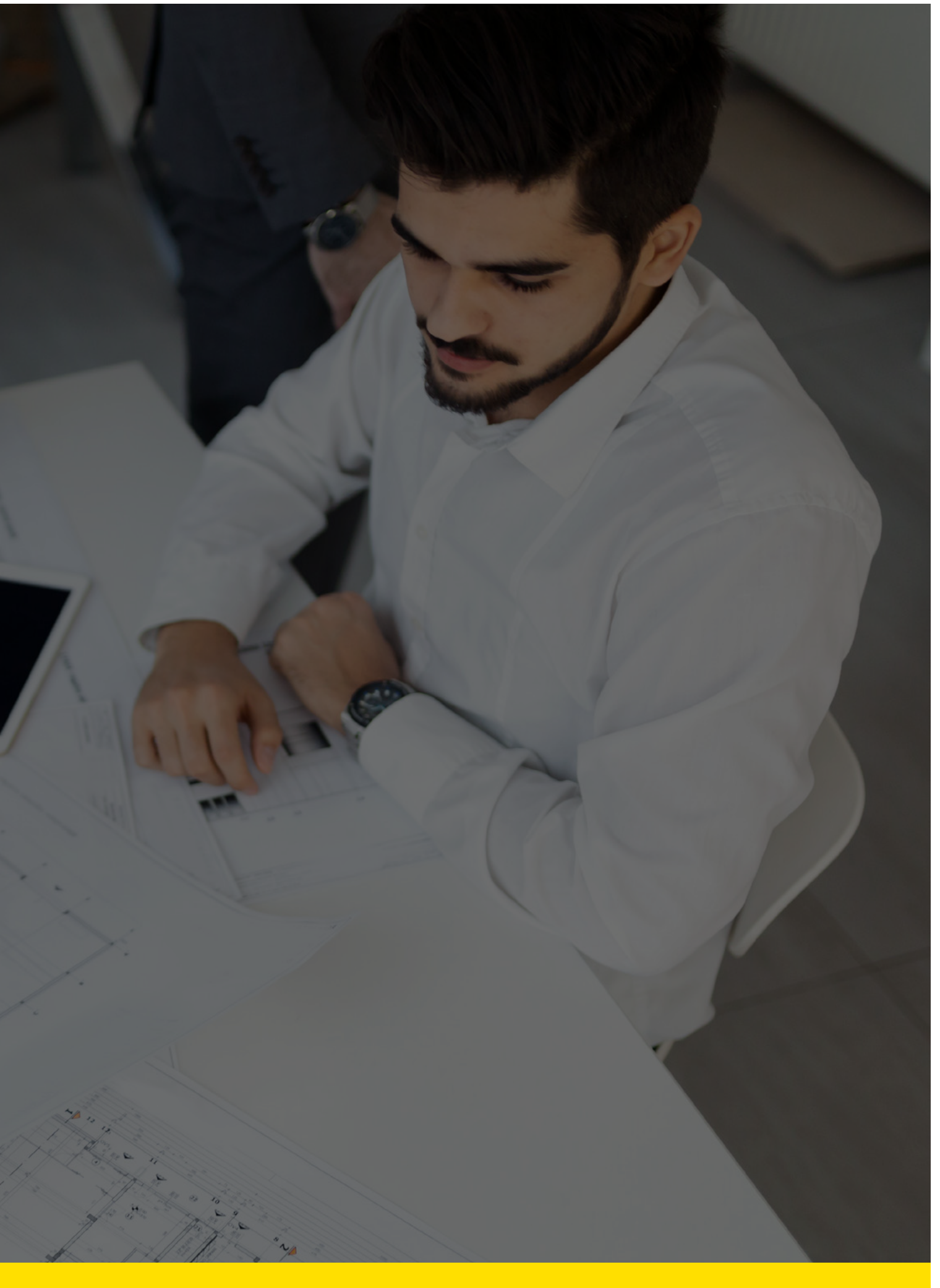
Mesh sheet



RALOE



Your expert and
trustworthy partner



The image shows a modern, multi-story office building with a white facade and a large glass section. A yellow rectangular overlay on the left side contains the RALOE logo and two circular icons with upward and downward arrows.

RALOE



Headquarters and offices

HEADQUARTERS /VALENCIA BRANCH

C/ Coeters, 27
46980 Paterna
+34 961 345 350
comercial@raloe.com

MADRID BRANCH

C/ Arboleda 18, Nave L
28031 Madrid
+34 913 013 720

BARCELONA BRANCH

C/ Montserrat Roig, 56
08908 L'Hospitalet
+34 932 643 910

RALOE EXPORT

+34 961 345 379
export@raloe.com

RALOE DEUTSCHLAND GmbH

Carl-Zeiss-Ring 14
85737 Ismaning
+49 (0) 89 306 44 765-0

RALOE UK LTD

Office F08, The Nucleus
Brunel Way, Dartford
Kent DA1 5GA
+44 (0) 759464 9122

FRANCE BRANCH

Rue Alessandro Volta- 1er étage
Zone Industrielle de Marcerolles
26500 BOURG LES VALENCE
+33 615 587 392

A photograph of three business professionals (two women and one man) standing in a glass elevator. They are all looking at a tablet held by one of the women. The man is holding a briefcase. The scene is dimly lit, with light coming from the elevator's interior.

Your Partner In Lift Solutions.

