

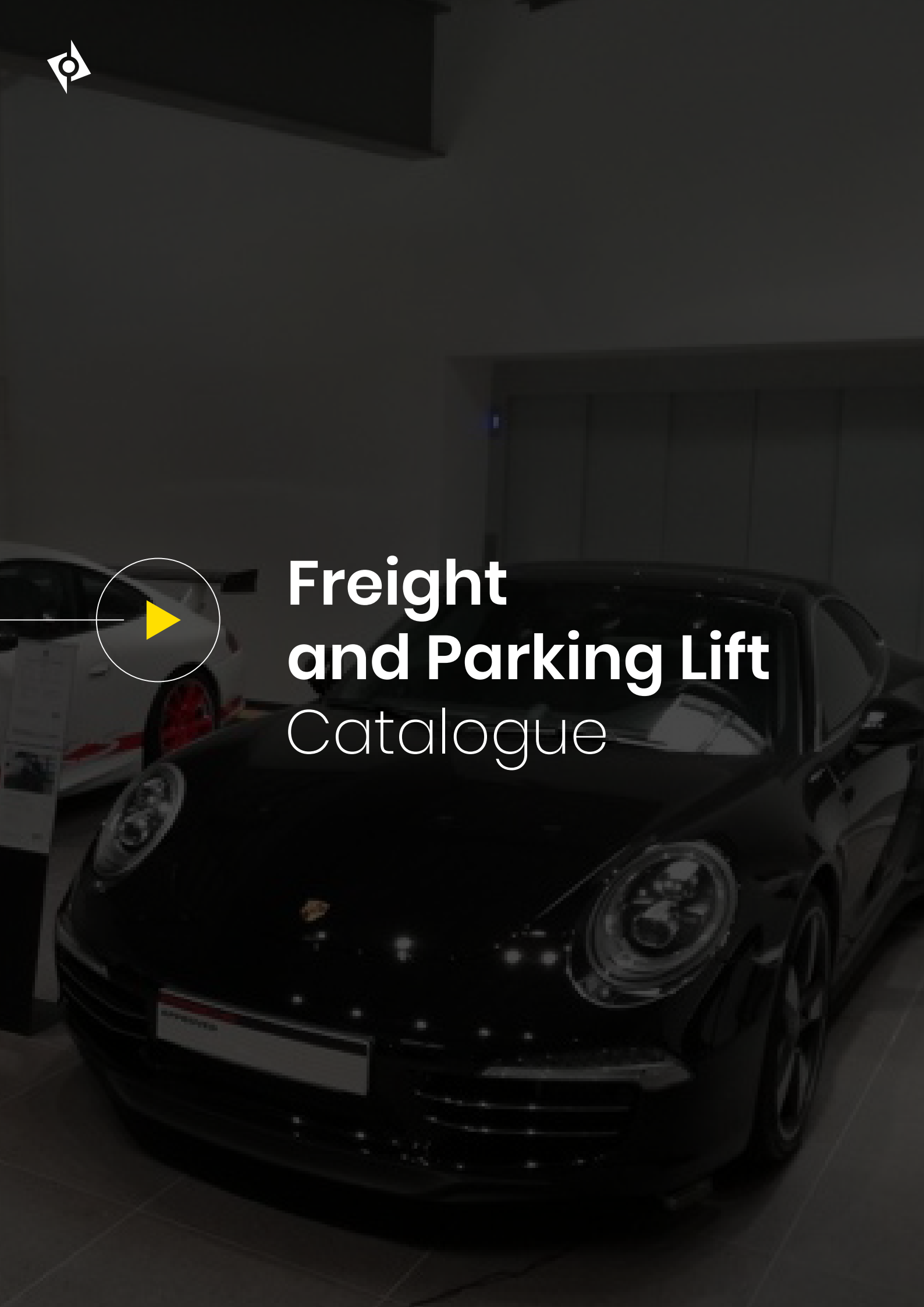


Your Partner In Lift Solutions.

Freight and Parking Lift Catalogue.



Freight and Parking Lift Catalogue





Index

01	► Product development	
	1.1 Symbio Heavy Loads	— 02
	1.1.1 Symbio Heavy Loads Use	
	1.1.2 Technical Features Symbio Heavy Loads	
	1.1.3 Finishes	
	1.2 Hércules	— 15
	1.2.1 Freight Lifts Use	
	1.2.2 Advantages and Features	
	1.2.3 Finishes	
	1.3 Parkinglift	— 26
	1.3.1 Parking Lifts Use	
	1.3.2 Advantages and Features	
	1.3.3 Finishes	
	1.4 Taurus	— 34
	1.4.1 Parking Lifts Use	
	1.4.2 Advantages and Features	



1.1

Symbio machine room-less lift for larger duty loads with 4:1 roping.

► Applications

Shopping centres
Hotels
Hospitals
Offices
Larger loads
Industrial

Technical characteristics Symbio GC

Rated load (Kg) 3.200 - 7.000

Rated speed (m/s) 0,5 - 1,0

Machine room CCM / SCM

Travel (m) Up to 70

Roping 4:1

Traction ropes diameter (mm) 10

Load (Kg)	Car Internal Height (mm)	Aprox. minimum pit (mm)	Aprox. minimum headroom (mm)
7.000	3.000	5.500	2.000
5.000	2.500	4.500	1.600
4.000	2.500	4.500	1.600

Entrances 0° - 180°

Door mechanism Automatic

Panoramic/scenic car options Yes

Weatherproof Yes

Advantages

Confort:

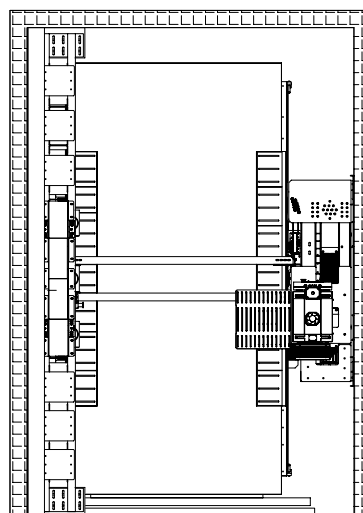
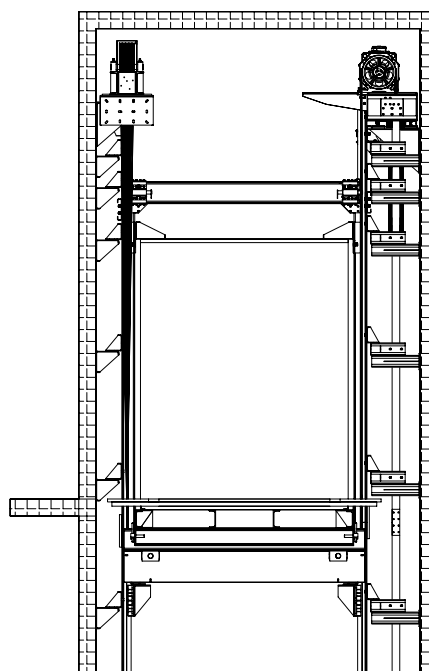
Roping 4:1 with pulleys under the car frame, providing excellent stability and great comfort.

Easy installation:

Self-supported Bedplate, and pulley beam suited to adapt to the shaft.

Adaptability:

Possibility of anti-creep for high specific loads.





101

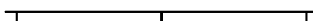
Walls

Brushed Stainless Steel



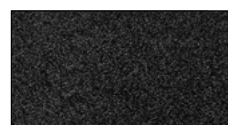
Joint

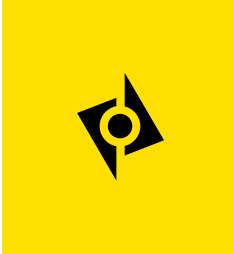
No joint between panels



Floor

Black Anti-slip rubber





S01

Walls

Joint

Floor

White



No joint between panels



Blue Anti-slip rubber

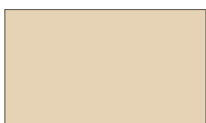




CH01

Walls

Light Ivory RAL 1015



Painted Sheet

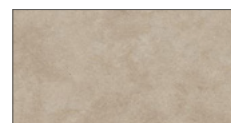
Joint

No joint between panels



Floor

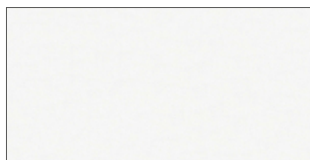
Sand Anti-slip rubber





Walls

Skinplates



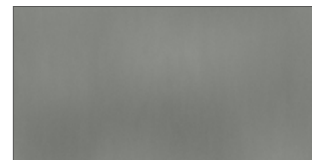
White



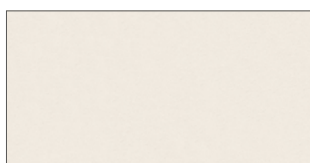
Stainless Steel



Grey



Simil stainless steel



Cream

Painted Sheet



White RAL 9016



Beige RAL 1019



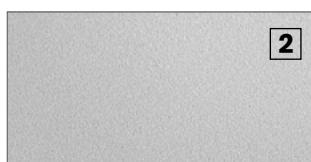
Black RAL 9005



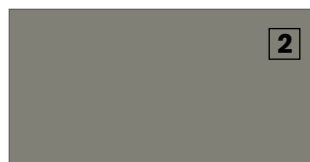
Light Ivory RAL 1015



Metallic grey RAL 9006



Pearl Light Grey RAL 9022



Concrete Grey RAL 7023



Pastel purple RAL 4009

 Tariff Type 2

* Any other RAL available under request

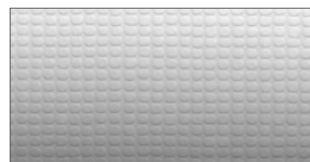
Stainless Steel



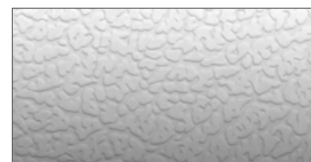
Brushed



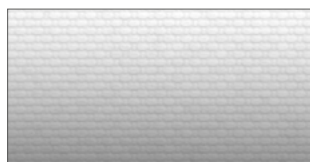
Checks



Canvas



Leather



Linen



Polished

Available any other
finish from:

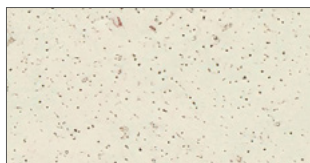


* For Galvanised sheet metal option, ask about finishes.

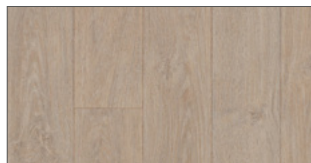


Floors

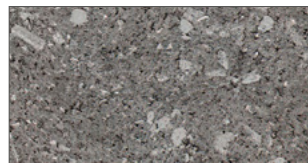
Anti-slip rubber 4,5 kg / m²



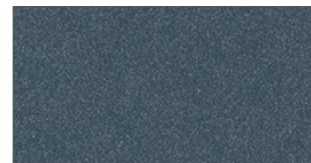
Beige



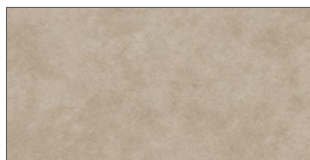
Oak



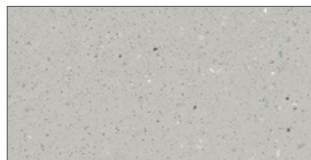
Grey Granite



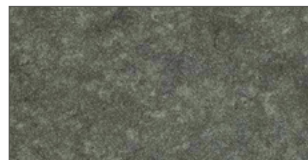
Blue



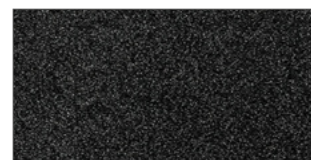
Sand



Grey

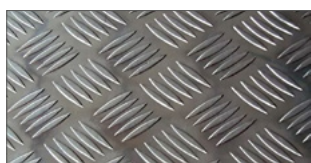


Grey concrete



Black

Metallic Floor



Aluminum checkerboard 6 Kg/m²



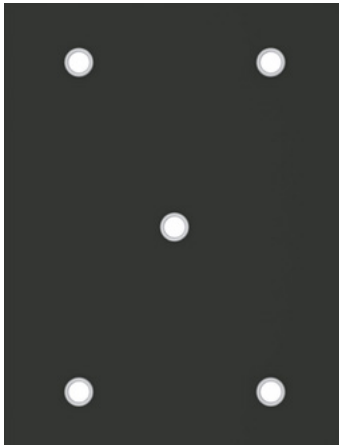
Stainless steel 12 Kg/m²



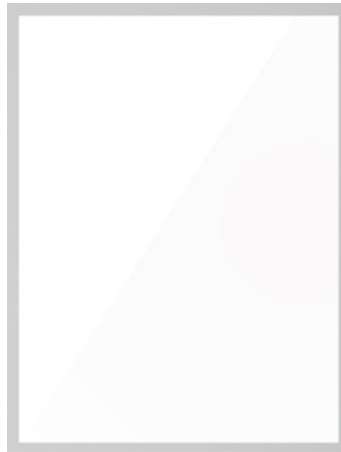
Steel durbar plate 36 Kg/m²



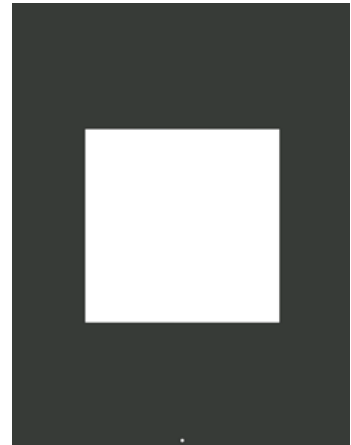
Ceilings



LED Spots



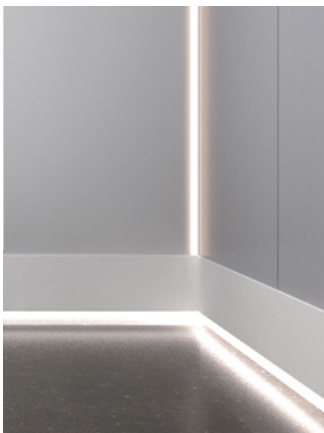
Tinted glass



LED Panel

► All ceilings can be selected in white, black and stainless steel finishes.

Indirect lighting



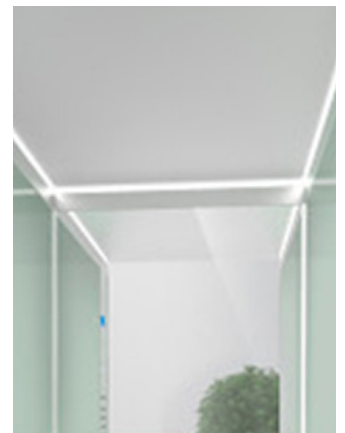
Skirting illumination



Car walls illumination



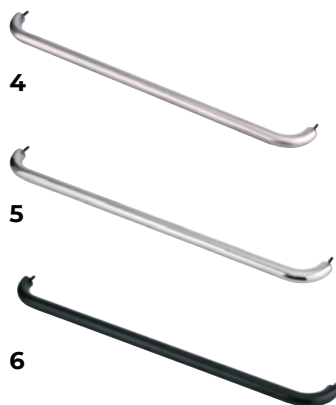
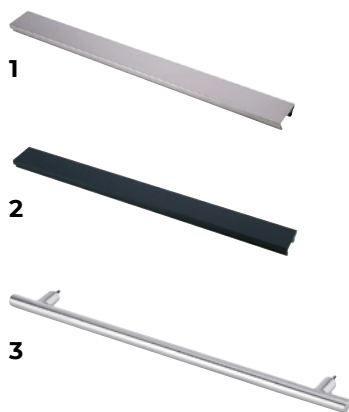
COP Illumination



Ceiling illumination

Handrail

STANDARD EN 81-20



- 1. Rectangular stainless steel
- 2. Rectangular skinplate
- 3. Straight tubular polished St. Steel
- 4. Curved tubular satin St. Steel
- 5. Curved tubular polished St. Steel
- 6. Curved tubular painted black

Automatic door

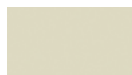


Primed Stainless steel

Door finishes

► Epoxy

STANDARD

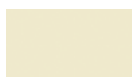


RAL 7032

OTHERS



RAL 9016



RAL 1015



RAL 9006



RAL 7004



RAL 1018



RAL 1019



RAL 6021



RAL 1034



RAL 3020



RAL 5012



RAL 9005



RAL 7010



RAL 7012



RAL 3004



RAL 6005



RAL 5011

► Smooth Stainless steel

STANDARD



AISI 441 2B/BA



AISI 304 2B



AISI 316 2B



AISI 441 2B



AISI 304 2B



AISI 304 2B



AISI 316 2B



AISI 316 4N

DECORATIVE



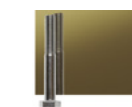
AISI 304 BA



AISI 304 BA



AISI 316 BA



AISI 304 BA



AISI 304 BA



AISI 304 BA



AISI 304 BA

► Patterned Stainless steel



AISI 441 BA⁽¹⁾



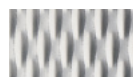
AISI 304 BA



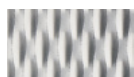
AISI 304 BA



AISI 316 BA⁽¹⁾



AISI 441 BA⁽¹⁾



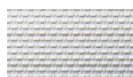
AISI 304 BA



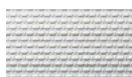
AISI 304 BA



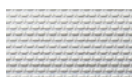
AISI 304 BA



AISI 441 BA⁽¹⁾



AISI 304 BA



AISI 304 BA



AISI 316 BA⁽¹⁾

Available any other
finish from:



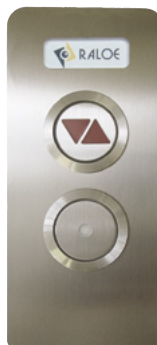
Car Operating panels



Landing operating panels



With engraving on steel plate



With transparent window plate



Surface mounted



With Display

Push buttons



Bas 120



Bas 120 Black



RT42



US91-EN



US95-EN



US90 Jumbo



US95 Jumbo



B3 (Arkel)



B3 Black (Arkel)



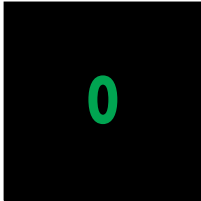
V2-P (Arkel)

Indicators

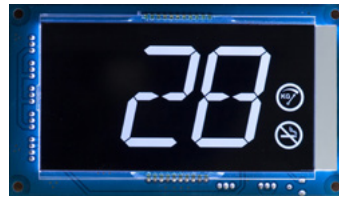


SURFACE MOUNTED

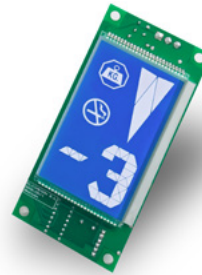
Indicators



TFT 2,8"
CARLOS SILVA



LCD10555
ARKEL



EM2LCD
MEGOM



LCDA
ARKEL



TFT 5,6"
CARLOS SILVA



MK_800
MEGOM



LIFTMEDIA
ARKEL



7"
CARLOS SILVA



10"
CARLOS SILVA



1.2

Hercules

Hercules is the twin piston hydraulic lift for persons and loads.

Standard sizes

Q (kg)	SW	SD	CW	CD	CO
1.500	2.300	2.500	1.500	2.200	1.000
2.000	2.600	2.500	1.800	2.200	1.500
2.500	3.000	2.500	2.200	2.200	1.800
3.000	3.150	2.850	2.200	2.500	1.900
3.500	3.200	3.150	2.250	2.800	2.200
4.000	3.200	3.550	2.250	3.200	2.200
5.000	3.450	3.850	2.500	3.500	2.400

SW: Shaft Width
SD: Shaft Depth
CW: Cabin Width

CD: Cabin Depth
CO: Clear Opening

► Applications

**Industrial
Heavy Loads**

► Freight Lifts use

Even load distribution. Manually loaded into the car or by hand pallet truck. For larger loads, anti-creep locks must be used. The packages weight to be loaded shall not exceed $Q/4$.

High point loads. A forklift can be introduced into the car.

Comfort: Comfort: electronic valve train for smoother ride comfort.

Technical Features

Duty Load (Kg)	1.500 – 10.000*
Duty speed	0,18 – 0,63
Machine room	CCM
Travel	Up to 25m
Roping	1:1 – 2:1
Rope diameter (mm)	10 – 13

Q (kg)	Minimum Pit (mm)	Minimum Headroom (mm)
Q ≤ 2.500	1.000	3.245
Q > 2.500	1.035	3.245
Q ⇒ 3.500	1.055	3.245

Door type	Automatic
Clear opening	1.300 – 3.000 mm
Hydraulic power unit	GMV / MORIS / BUCHER
Control panel:	All
Car models	Q01 – Q02 – Q03 – Q4 – Q11 – Q12 – Q13 – Q14
Panoramic car	No
Weatherproof	No

*It shall be technically possible to achieve certain load ranges depending on the characteristics of the installation.

Standards

EN81 – 2
EN81 – 20
EN81 – 21





Advantages

Safety:

In the event of a power failure, the car travels to the next stop, opening the doors, and easing the removal of the load.

Easy installation:

The design is focused on reducing the installation hours.

Stability:

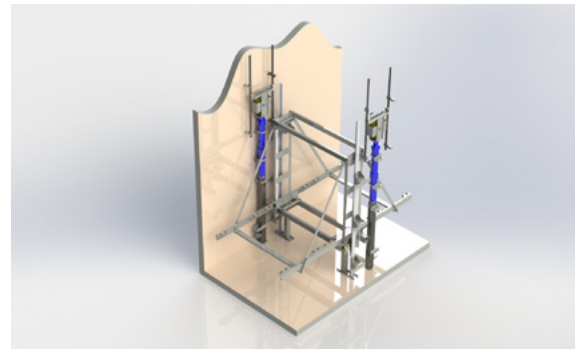
Includes car braces providing more rigidity and stability.

Anti-creep system (For high point loads)

System to maintain the car position locked down during the loading and unloading process.

Type 1: When comfort is important. Avoid car movement with 2 or 4 Pawl Devices coupled to the car frame.

NS 40/50, max. load 4,000 kg. NS 70/100, max. load 7,000 kg



Type 2: Exclusive for goods lifts.

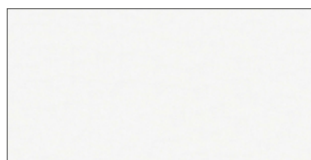
The rupture valve closes the circuit preventing oil leaking.





Walls

Skinplates



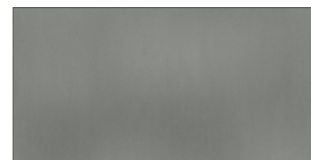
White



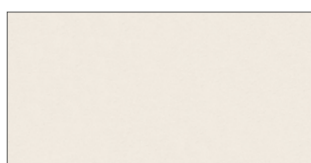
Stainless Steel



Grey



Simil stainless steel



Cream

Painted Sheet



White RAL 9016



Beige RAL 1019



Black RAL 9005



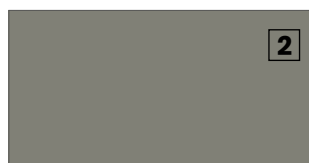
Light Ivory RAL 1015



Metallic grey RAL 9006



Pearl Light Grey RAL 9022



Concrete Grey RAL 7023



Pastel purple RAL 4009

2 Tariff Type 2

* Any other RAL available under request

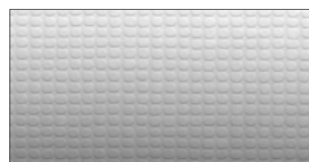
Stainless Steel



Brushed



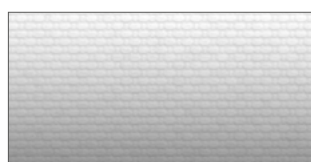
Checks



Canvas



Leather



Linen



Polished

Available any other
finish from:

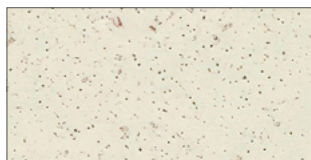


* For Galvanised sheet metal option, ask about finishes.

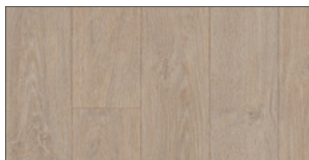


Floors

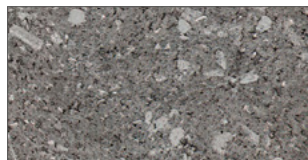
Anti-slip rubber 4,5 kg / m²



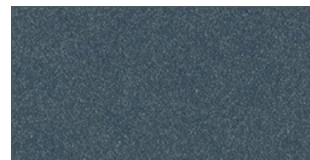
Beige



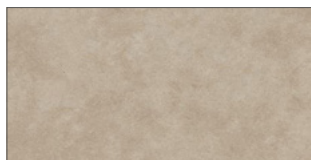
Oak



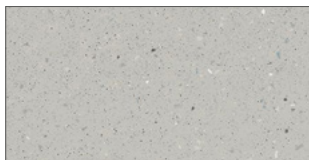
Grey Granite



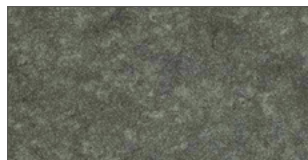
Blue



Sand



Grey

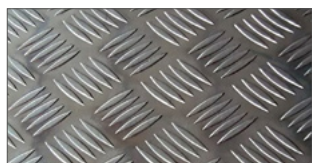


Grey concrete



Black

Metallic Floor



Aluminum checkerboard 6 Kg/m²



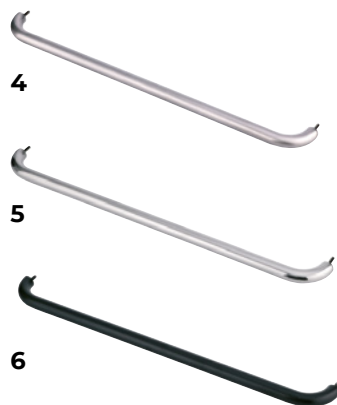
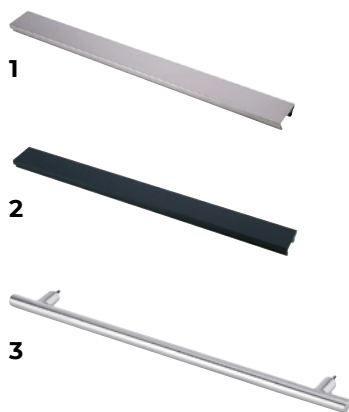
Stainless steel 12 Kg/m²



Steel durbar plate 36 Kg/m²

Handrail

STANDARD EN 81-20



1. Rectangular stainless steel
2. Rectangular skinplate
3. Straight tubular polished St. Steel
4. Curved tubular satin St. Steel
5. Curved tubular polished St. Steel
6. Curved tubular painted black

Automatic door



Primed Stainless steel

Door finishes

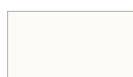
► Epoxy

STANDARD

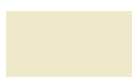


RAL 7032

OTHERS



RAL 9016



RAL 1015



RAL 9006



RAL 7004



RAL 1018



RAL 1019



RAL 6021



RAL 1034



RAL 3020



RAL 5012



RAL 9005



RAL 7010



RAL 7012



RAL 3004



RAL 6005



RAL 5011

► Smooth Stainless steel

STANDARD



AISI 441 2B/BA



AISI 304 2B



AISI 316 2B



AISI 441 2B



AISI 304 2B



AISI 304 2B



AISI 316 2B



AISI 316 4N

DECORATIVE



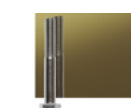
AISI 304 BA



AISI 304 BA



AISI 316 BA



AISI 304 BA



AISI 304 BA



AISI 304 BA



AISI 304 BA

► Patterned Stainless steel



AISI 441 BA ⁽¹⁾



AISI 304 BA



AISI 304 BA



AISI 316 BA ⁽¹⁾



AISI 441 BA ⁽¹⁾



AISI 304 BA



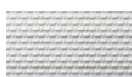
AISI 304 BA



AISI 304 BA



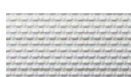
AISI 441 BA ⁽¹⁾



AISI 304 BA



AISI 304 BA



AISI 316 BA ⁽¹⁾

Available any other
finish from:



Car Operating panels



Landing operating panels



With engraving on steel plate



With transparent window plate



With Display

Push buttons



Bas 120



Bas 120 Black



RT42



US91-EN



US90 Jumbo

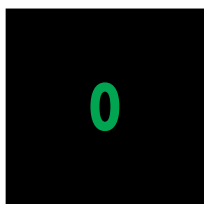


US95 Jumbo



US95-EN

Indicators



TFT 2,8"
CARLOS SILVA



EM2LCD
MEGOM



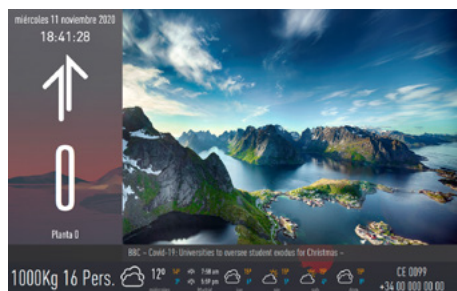
TFT 5,6"
CARLOS SILVA



MK_800
MEGOM



7"
CARLOS SILVA



10"
CARLOS SILVA



Your Partner **In Lift Solutions.**





1.3

Parkinglift

Hydraulic Lift for vehicles in compliance with the Lifts Directive.

Advantages

Safety:

In the event of a power failure, the car lowers to the next stop facilitating the exit of the vehicle and the opening of doors (optional).

Easy installation:

The design is focused on reducing the assembly hours.

Stability:

Includes car braces providing more rigidity and stability.

Parking assistance system:

Easy positioning of the vehicle with light curtain. In the upper part of the door, the indicators display whether the vehicle is correctly positioned (optional).

► Applications

Vehicles

Residential buildings

Standard sizes

Q (kg)	SW	SD	CW	CD	CO
3.000	3.250	5.300	2.300	4.900	2.100
3.500	3.450	5.400	2.500	5.000	2.200
4.000	3.600	5.900	2.600	5.500	2.300
5.000	3.900	6.400	3.000	5.800	2.500

SW Shaft Width
SD Shaft Depth
CW Cabin Width

CD Cabin Depth
CO Clear Opening

► Parking Lifts Use

Certificate

We have a design exemption for the **ParkingLift** that allows us to optimize the whole car lift for the loads used.

Deviation from standard for surface larger than table 6 in EN 81.20 standard.

Technical Features

Duty Load (kg)	3.000 – 5.500*
Duty speed	0,18 – 0,5
Machine room:	CCM
Travel	Up to 25 m
Roping	2:1
Rope diameter (mm)	12 – 13

Q (kg)	Minimum pit (mm)	Minimum headroom (mm)
Q ≤ 5.000	900	2.925
Q = 5.500	1.000	2.925

Door type	Automatic
Clear opening	2.000 – 3.000 mm
Hydraulic power unit	GMV / MORIS / BUCHER
Control panel	All
Car models	QMC01 – QMC02 – QMC03 – QMC04 – PR40MCB
Panoramic car	No
Weatherproof	No

Standards

EN81-2
EN81-20
EN81-21

*It shall be technically possible to achieve certain load ranges depending on the characteristics of the installation.

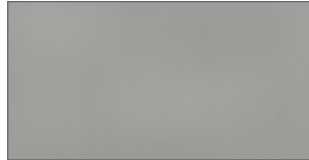


Walls

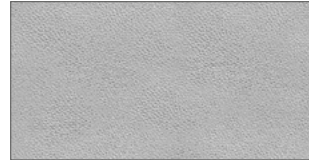
Skinplates



White



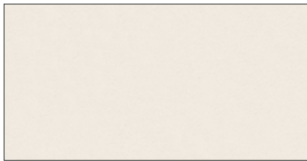
Stainless Steel



Grey



Simil stainless steel



Cream

Painted Sheet



White RAL 9016



Beige RAL 1019



Metallic grey RAL 9006



Black RAL 9005



Pearl Light Grey RAL 9022

 Tariff Type 2

* Any other RAL available under request

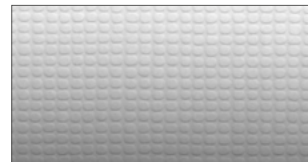
Stainless Steel



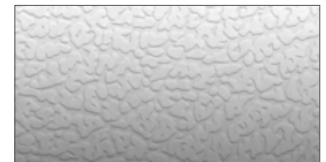
Brushed



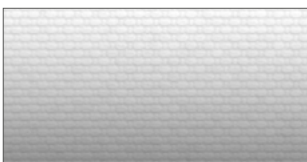
Checks



Canvas



Leather



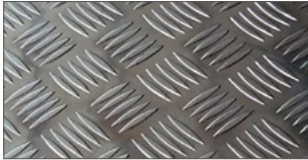
Linen



Polished



Metallic Floor



Aluminum checkerboard 6 Kg/m²



Stainless steel 12 Kg/m²



Steel durbar plate 36 Kg/m²

Rubber floors



Black rubber circles

Automatic door

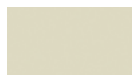


Primed Stainless steel

Door finishes

► Epoxy

STANDARD

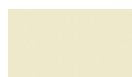


RAL 7032

OTHERS



RAL 9016



RAL 1015



RAL 9006



RAL 7004



RAL 1018



RAL 1019



RAL 6021



RAL 1034



RAL 3020



RAL 5012



RAL 9005



RAL 7010



RAL 7012



RAL 3004



RAL 6005



RAL 5011

► Smooth Stainless steel

STANDARD



AISI 441 2B/BA



AISI 304 2B



AISI 316 2B



AISI 441 2B



AISI 304 2B



AISI 304 2B



AISI 316 2B



AISI 316 4N

DECORATIVE



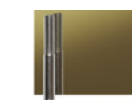
AISI 304 BA



AISI 304 BA



AISI 316 BA



AISI 304 BA



AISI 304 BA



AISI 304 BA



AISI 304 BA

► Patterned Stainless steel



AISI 441 BA⁽¹⁾



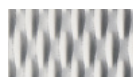
AISI 304 BA



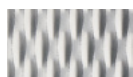
AISI 304 BA



AISI 316 BA⁽¹⁾



AISI 441 BA⁽¹⁾



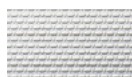
AISI 304 BA



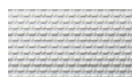
AISI 304 BA



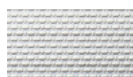
AISI 304 BA



AISI 441 BA⁽¹⁾



AISI 304 BA



AISI 304 BA



AISI 316 BA⁽¹⁾

Available any other
finish from:



Car Operating panels



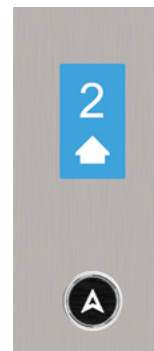
Landing operating panels



With engraving on steel plate



With transparent window plate



With Display

Push buttons



Bas 120



Bas 120 Black



RT42



US91-EN



US90 Jumbo



US95 Jumbo



US95-EN

Indicators



TFT 2,8”
CARLOS SILVA



EM2LCD
MEGOM



TFT 5,6”
CARLOS SILVA



MK_800
MEGOM



7”
CARLOS SILVA



10”
CARLOS SILVA



► Applications

Vehicles
Residenciales

1.4

Taurus

Hydraulic platform Lift for vehicles with passengers in compliance with the Machine directive.

Advantages

Flexibility: Integrated power unit and control panel inside the shaft (MRL).

Comfort: Movement through T-profile lift guides, low pressure side acting 2:1 piston. This provides a smoother and less noisy ride.

Safety: Calculations in accordance with EN81.20 Standard. Downwards double safety valve. Rupture valve in accordance with EN81.20. Instantaneous safety gear on car frame. Minimum pressure safety valve. Safety light curtains. A safety level equivalent to that of any lift.

Adaptability: Adjustable wheel distance with different heights to facilitate loading and unloading of the vehicle.

Standard sizes

Q (kg)	SW	SD	CW	CD	CO
2.800	2.950	4.260	2.450	4.200	2.350
2.700	2.950	4.860	2.450	4.800	2.350
2.500	2.950	5.460	2.450	5.400	2.350

SW: Shaft Width
SD: Shaft Depth
CW: Cabin Width

CD: Cabin Depth
CO: Clear Opening

► Taurus Lift Use

Options:

Hörmann sectional doors.
Remote controls.
Side handrails.

Car lighting.
Integrated or standard phone.

Technical features

Duty load(Kg)	2.500 kg.
Duty speed	0,15 m/s
Stops	up to 4 stops
Roping	2:1 (with a single side piston)
Standard pit	350 mm.
Maximum travel	10m
Minimum headroom	2.200 mm.
Maximum power	9,5 kw



For other configurations or shaft sizes, please consult us.



► Taurus door finishes:

11 colours, same price





RALOE



Your Partner
In Lift Solutions.

